

# **DELHI TRANSCO LTD.**

STATE LOAD DISPATCH CENTER

## **PROGRESS REPORT**

\*\*\*\*\*

AUG 2017

<b>S. No.</b>	<b>CONTENTS</b>	<b>Page No.</b>
<b>1.</b>	<b>Salient Features of Delhi Power System</b>	<b>3</b>
<b>2.</b>	<b>Performance of Generating Stations within Delhi</b>	<b>4</b>
<b>3.</b>	<b>Details of Outage of Generating Stations within Delhi</b>	<b>5-12</b>
<b>4.</b>	<b>Allocation of Power to Delhi from unallocated quota of central sector</b>	<b>13</b>
<b>5.</b>	<b>Allocation of Power to Discoms</b>	<b>14</b>
<b>6.</b>	<b>Power Availability Demand Position of Delhi at the time of occurrence of Peak Demand</b>	<b>15</b>
<b>7.</b>	<b>Power Availability Demand Position of Delhi at the time of occurrence of Maximum Un-Restricted Demand</b>	<b>16</b>
<b>8.</b>	<b>Source wise scheduled drawl from grid and Availability within Delhi</b>	<b>17-20</b>
<b>9.</b>	<b>Shedding Details</b>	<b>21-25</b>
<b>10.</b>	<b>Load Curve for the Day of Peak Demand</b>	<b>26</b>
<b>11.</b>	<b>Load Curve for the day of occurrence of Maximum Un-Restricted Demand</b>	<b>27</b>
<b>12.</b>	<b>Load Curve for the day of Maximum Energy Consumed</b>	<b>28</b>
<b>13.</b>	<b>Load Curve for the day of Maximum Un-Restricted Energy Demand</b>	<b>29</b>
<b>14.</b>	<b>Load Duration Curve</b>	<b>30</b>
<b>15.</b>	<b>Frequency Analysis</b>	<b>31</b>
<b>16.</b>	<b>Voltage Profile for significant 220kV Sub-Stations</b>	<b>32</b>
<b>17.</b>	<b>Voltage Profile for significant 400kV Sub-Stations</b>	<b>33-34</b>
<b>18.</b>	<b>Details of Capacitors Installations in Delhi</b>	<b>35-40</b>
<b>19.</b>	<b>Tripping Details of 400/220 KV System in Delhi Power System</b>	<b>41-44</b>
<b>20.</b>	<b>Details of Under frequency Relay operations in Delhi Power System</b>	<b>45</b>

1 **SALIENT FEATURES OF DELHI POWER SYSTEM**

Sr. No.	Features	AUG. 2016	AUG. 2017
1	<b>Effective Generation Capacity within Delhi in MW</b>		
	Rajghat Power House	135	135
	Gas Turbine	270	270
	Pragati Power Corporation Ltd.	330	330
	Badapur Thermal Power Station	705	705
	Rithala GT	108	108
	Bawana	1372	1372
	TOWMCL	16	16
	Total	2936	2936
2	<b>Maximum Unrestricted Demand (MW)</b>	<b>5707</b>	<b>6133</b>
	Date	05.08.2016	18.08.17
	Time	15.30.47	22.50.57
3	<b>Peak Demand met (MW)</b>	<b>5707</b>	<b>6129</b>
	Date	05.08.2016	18.08.17
	Time	15.30.47	22.50.57
4	Peak Availability (MW)	5604	6126
5	Shortage (-) / Surplus (+) in MW	(-) 103	(-) 3
6	Percentage Shortage (-) / Surplus (+)	(-) 1.8	(-) 0.05
7	Maximum Energy Consume in a day (Mus)	117.129	126.820
8	Energy Consumed during the month	<b>3207.237</b>	<b>3471.663</b>
9	<b>Load Shedding in Mus</b>		
A)	Due to Grid Restrictions		
i)	Under Frequency Relay Operations	0.000	0.000
ii)	Manual Load shedding from DTL S/Stns.	0.000	0.000
iii)	Load Shedding due to low frequency / Low Voltage / TTC/ATC Violation		
	NDPL	0.127	0.000
	BRPL	0.527	0.003
	BYPL	0.040	0.000
	NDMC	0.000	0.000
	MES	0.000	0.000
iv)	Due to transmission Constraints in Central Sector	0.000	0.000
	<b>Total due to Grid Restriction</b>	<b>0.694</b>	<b>0.003</b>
B)	Due to Constraints in System in Mus		
	DTL	1.368	0.904
	NDPL	0.416	0.086
	BRPL	0.654	1.258
	BYPL	0.084	0.151
	NDMC	0.009	0.000
	MES	0.000	0.000
	Other Agencies	0.003	0.000
	<b>Total</b>	<b>2.534</b>	<b>2.399</b>
11	<b>Grand Total in Mus</b>	<b>3.228</b>	<b>2.402</b>

2. PERFORMANCE OF GENERATING STATIONS WITHIN DELHI DURING AUGUST 2017

A) For the month of August 2017

All Figures in MUs

S. No	Stations	Gross Generation	Aux. Consumption	Net Generation	Availability (%)	Backing Down
1.	RPH	0.000	0.249	-0.249	0.00	0.00
2.	GT	41.223	1.540	39.683	79.22	114.855
3.	PPCL	187.271	4.318	182.953	98.01	50.735
4.	BTPS	290.679	25.110	265.569	61.12	39.820
5.	Rithala	0.000	0.062	-0.062	<b>0.00</b>	61.008
6.	Bawana	332.632	12.497	320.135	90.27	577.602
7.	Towmcl	13.170	2.077	11.093	--	--
8.	EDWPCL	1.925	1.053	0.872	--	--
9.	DMSWL	10.232	2.063	8.169	--	--
	<b>TOTAL</b>	<b>877.132</b>	<b>48.969</b>	<b>828.163</b>	--	<b>844.02</b>

B) For the Year 2017-18 (Upto August 2017)

Power Station	Effective Capacity (MW)	Net Generation in MUs for Aug. 2017	Availability (%) for Aug. 2017	PLF (%) for Aug. 2017	Cumulative Generation in MUs upto Aug. 2017 for the year 2017-18	Cumulative Availability in % upto Aug. 2017 for the year 2017-18	Cumulative PLF in % upto Aug. 2017 for the year 2017-18
RPH	135	-0.249	0.00	0.000	0.000	0.00	-0.120
GT	270	39.683	79.22	20.28	233.579	79.30	23.15
PPCL	330	182.953	98.01	76.70	688.884	97.97	57.10
BTPS	705	265.569	61.12	51.16	903.593	59.07	47.15
Rithala	108	-0.062	<b>0.00</b>	86.15	0.000	<b>0.00</b>	87.98
Bawana	1372	320.135	90.27	33.27	1270.525	86.36	25.41
Towmcl	16	11.093	--	--	68.475	--	--
EDWPCL	--	0.872	--	--	9.720	--	--
DMSWL	--	8.169	--	--	48.663	--	--
<b>TOTAL</b>	<b>2936</b>	<b>828.163</b>	--	--	<b>3223.439</b>	--	--

### 3 DETAILS OF OUTAGES OF GENERATING STNS. WITHIN DELHI W.E.F. APRIL 2017

#### RPH

Unit No	Capacity in MW	Outage		Synchronization		Reason of Outage
		Date	Time	Date	Time	
1	67.5	08.05.15	13.40	Contd.		Not in operation due to not meeting pollution norms.

Unit No	Capacity in MW	Outage		Synchronization		Reason of Outage
		Date	Time	Date	Time	
2	67.5	21.05.15	10.20	Contd.		Not in operation due to not meeting pollution norms.

#### (B) Gas Turbine

Unit No	Capacity in MW	Outage		Synchronization		Reason of Outage
		Date	Time	Date	Time	
1	30	30.4.17	07:00	30.4.17	19:15	Machine stopped to attend Lealakege of Coolooing water from CW return line.
		30.4.17	19:15	2.5.17	12:02	After attending the cooling water leakage machine could not be taken on bar due no schedule from SLDC on CC NG.
		2.5.17	23:35	24.5.17	06:57	Machine stopped due to no schedule from SLDC on CC NG
		4.6.17	15:47	4.6.17	17:16	machine tripped with following alarm GAC Electrical protection Trouable , Electrical Trouable Normal shut down and Genarator Excitation field failure alarm. Processor of DVR found faulty and same was replaced
		7.6.17	09:45	14.6.17	12:51	Machine could not be taken on bar due to no schedule from SLDC on CC NG
		20.6.17	17:26	20.6.17	23:59	Machine tripped on Electrical Trouble Normal shut down and generator electrical protection. The following alarm also appeared on protection panel. Relay P141B operated, Rotor or stator earth fault and 11 KV Bkr gas pressure low.
		23.6.17	23:02	24.6.17	14:05	Machine Stopped due to Low SF-6 Gas Pressure in 11 KV Breaker.
		24.6.17	14:40	26.6.17	19:40	Machine could not be taken on bar due to no schedule from SLDC on CC NG
		2.7.17	09:47	3.7.17	17:14	Stopped due to low demand and high frequency
		13.7.17	18:16	18.7.17	20:22	
		22.7.17	12:16	11.8.17	15:37	
				11.8.17	18:24	11.8.17
		12.8.17	00:05	31.8.17	23:59	Machine stopped as per SLDC message due to low demand on CCNG.

Unit No	Capacity in MW	Outage		Synchronization		Reason of Outage
		Date	Time	Date	Time	
2	30	4.4.17	00:04	20.4.17	16:50	Machine stopped due to low demand on CCNG from SLDC
		30.4.17	07:00	30.4.17	19:15	Machine stopped to attend Lealakge of Cooling water from CW return line.
		30.4.17	19:15	24.5.17	10:20	After attending the cooling water leakage machine could not be taken on bar due no schedule from SLDC.
		29.5.17	06:12	29.5.17	09:45	Machine tripped while rebooting the Mark-IV system as the machine was operating while R&S controller was inoperative.
		29.5.17	09:45	02.06.17	09:15	Machine cleared from C&I side but SLDC did not allow to un the machine due to low demand in the Grid.
		2.6.17	09:15	2.6.17	20:13	machine could not be taken on bar as mark-IV system was found hanged. Card "HCMA" in <C> communicator and "HXPD" in <R> Controller was found faulty. These cards were replaced. After executing start command Machine came in temperature control mode and speed of machine did not increase after 2850 RPM.
		7.6.17	09:45	13.6.17	14:12	Machine could not be taken on bar due to no schedule from SLDC on CC NG
		13.6.17	14:26	14.6.17	12:27	Machine taken on bar for testing.
		2.7.17	09:47	3.7.17	17:52	Stopped due to low demand and high frequency
		8.7.17	15:25	9.7.17	16:34	Tripped on loss of field on alarm Electrical trouble shutdown.
		10.7.17	10:26	10.7.17	16:45	Tripped on loss of field on alarm Electrical trouble shutdown.
		11.7.17	09:57	11.7.17	17:04	Machine tripped on Electrical Trouble Normal Shut Down and loss of field alarm on protection panel.
		11.7.17	17:10	13.7.17	10:43	Stopped due to low demand and high frequency
		13.7.17	12:35	14.7.17	13:50	Machine tripped on Electrical Trouble Normal Shut Down and loss of field alarm on protection panel.
		14.7.17	13:55	18.7.17	18:29	Stopped due to low demand and high frequency
		18.7.17	20:45	20.7.17	17:50	
22.7.17	18:59	10.8.17	15:38	Machine stopped as per SLDC message due to low demand on CCNG.		
12.8.17	00:07	31.8.17	23:59			

Unit No	Capacity in MW	Outage		Synchronization		Reason of Outage
		Date	Time	Date	Time	
3	30	4.4.17	23:58	30.4.17	07:00	Machine stopped due to low demand on CC Spot R-LNG from SLDC
		30.4.17	07:00	30.4.17	19:15	machine was not available due to non availability of cooling water as there was leakage from CW return line for which plant shut down was taken.
		30.4.17	19:15	29.7.17	14:53	Machine could not taken on load due to no schedule from SLDC on CC Spot R-LNG
		29.7.17	15:04	04.8.17	17:10	Machine stopped after taking trial test as there was no schedule from SLDC.
		4.8.17	22:32	5.8.17	16:42	Machine stopped as per SLDC message due to low demand on CCNG.
		6.8.17	02:15	31.8.17	23:59	Machine stopped as per SLDC message due to low demand on CCNG.

Unit No	Capacity in MW	Outage		Synchronization		Reason of Outage
		Date	Time	Date	Time	
4	30	4.4.17	23:58	30.4.17	07:00	Machine stopped due to low demand on CC Spot R-LNG from SLDC
		30.4.17	07:00	30.4.17	19:15	machine was not available due to non availability of cooling water as there was leakage from CW return line for which plant shut down was taken.
		30.4.17	19:15	02.06.17	12:25	Machine could not taken on load due to no schedule from SLDC on CC Spot R-LNG
		2.6.17	12:30	5.6.17	13:30	Machine stopped after testing as there was no schedule from SLDC on CCNG
		5.6.17	13:30	5.6.17	15:50	After giving start command to machine it came on FSNL in due time. While trying to sybchronise its 11 KV breaker not taking Close command inspite all permissive healthy.After checking DVR and Mark-Vie system it was found that closing permissive from protection panel was not available. The problem rectified by Protection department and same was synchronised with Grid.
		6.6.17	22:13	31.8.17	23:59	Machine stopped due to low schedule from SLDC on CC Spot

Unit No	Capacity in MW	Outage		Synchronization		Reason of Outage
		Date	Time	Date	Time	
5	30	4.4.17	00:00	25.4.17	18:57	machine taken to Hot Gas Path Inspection & Generator O/h since 25/03/2017
		25.4.17	19:57	30.4.17	07:00	Machine Cleared after synchronizing and running for one hour on 10 MW, 20MW and 30 MW
		30.4.17	07:00	30.4.17	19:15	machine was not available due to non availability of cooling water as there was leakage from CW return line for which plant shut down was taken.
		30.4.17	19:15	1.5.17	07:22	Machine could not taken on load due to no schedule from SLDC on CC Spot R-LNG
		16.5.17	12:40	16.5.17	13:46	Machine tripped on loss of Excitation alongwith Electrical trouable normal shut down alarm on protection panel.
		24.5.17	11:25	05.06.17	17:50	Machine stopped due to no schedule from SLDC on CC NG
		16.6.17	03:46	13.07.17	13.21	Machine could not be taken on bar due to no schedule from SLDC on CC NG
		13.7.17	14:41	13.7.17	17:15	Machine tripped on Exhaust over temperature trip alarm.
		14.7.17	18:57	15.7.17	12:25	Tripped on electrical normal shutdown.UAT E/F operated, differential trip, dirrerential R, Differential Y and Overall differential operated
		15.7.17	12:51	15.7.17	16:39	Machine stopped after taking trial and no schedule from SLDC.
		15.7.17	17:22	18.7.17	11:08	Stopped due to low demand and high frequency
		18.7.17	18:50	20.7.17	11:06	Machine stopped due to leakage of water from Warren Pump and less load on machine.
		20.7.17	13:37	22.7.17	18:45	Machine stopped after taking trial and no schedule from SLDC.
		28.7.17	10:42	29.7.17	15:25	Machine tripped on overspeed bolt trip alarm.Over speed bolt trip alarm reset and not taken on bar due to no schedule from SLDC.
		29.7.17	15:34	02.08.17	11.40	Machine stopped after taking trial and no schedule from SLDC.
		5.8.17	20:08	11.8.17	13:45	Machine stopped as per SLDC message due to low demand on CCNG.
		22.8.17	18:00	22.8.17	21:03	Machine stopped due to gas pressure low in 11 KV breaker
		26.8.17	12:00	26.8.17	19:50	Stopped due to low demand and high frequency.
30.8.17	18:33	30.8.17	21:30	Machine stopped due to SF6 Gas pressure low alarm in 11 KV breakers.		
30.8.17	21:30	31.8.17	23:59	Machine cleared from C&I side but not taken on load due to low schedule from SLDC.		

Unit No	Capacity in MW	Outage		Synchronization		Reason of Outage
		Date	Time	Date	Time	
6	30	23.03.17	14.17	30.4.17	07:00	Machine stopped due to low schedule from SLDC on CC spot R-LNG.
		30.4.17	07:00	30.4.17	19:15	machine was not available due to non availability of cooling water as there was leakage from CW return line for which plant shut down was taken.
		30.4.17	19:15	2.5.17	12:45	Machine could not taken on load due to no schedule from SLDC on CC Spot R-LNG
		2.5.17	12:45	2.5.17	22:25	After getting schedule from SLDC, Machine could not be taken on load due to early disengaging of Diesel Engine before 65% of Turbine full rpm.
		7.5.17	00:23	7.5.17	00:47	Machine taken on FSNL to change over from Bus bar BB-1 to BB-3
		22.5.17	15:00	06.06.17	21.21	Machine stopped due to no schedule from SLDC on CC NG
		16.6.17	03:49	13.07.17	15.20	Machine could not be taken on bar due to no schedule from SLDC on CC NG
		20.7.17	20:18	22.7.17	12:12	Stopped due to low demand and high frequency
		27.7.17	02:44	27.7.17	15:35	(i) Communication failed with IO pack
		27.7.17	15:40	28.7.17	11:38	Stopped due to low demand and high frequency
		2.8.17	13:08	6.8.17	02:06	Machine stopped as per SLDC message due to low demand on CCNG.
		10.8.17	13:18	10.8.17	13:29	Machine came on FSNL due to disturbance in Pragati 220 KV I.P Ext Grid.
		26.8.17	03:13	26.8.17	22:22	Stopped due to low demand and high frequency
		26.8.17	22:53	30.8.17	17:50	

Unit No	Capacity in MW	Outage		Synchronization		Reason of Outage
		Date	Time	Date	Time	
STG -1	30	30.4.17	07:00	30.4.17	19:15	Machine stopped to attend Lealakge of Cooling water from CW return line.
		30.4.17	19:15	2.5.17	15:56	Machine could not taken on load due to no schedule from SLDC on CC Spot R-LNG
		2.5.17	23:35	24.5.17	09:40	Machine stopped as there was no schedule on CCNG
		7.6.17	09:45	14.6.17	16:58	Machine could not be taken on bar due to no schedule from SLDC on CC NG
		2.7.17	09:47	3.7.17	17:14	Stopped due to low demand and high frequency
		8.7.17	15:25	8.7.17	17:07	Machine tripped as one of the running machine ,GT#2 tripped on loss of excitation.
		13.7.17	18:16	19.7.17	07:20	Stopped due to low demand and high frequency
		22.7.17	18:55	11.8.17	17:35	
		11.8.17	18:47	11.8.17	19:52	machine tripped on drum level very high alarm due drum level control valve of both circuit of HRSG# 2 not operative.
		12.8.17	00:07	16.8.17	12:45	Stopped due to low demand and high frequency.
		16.8.17	12:45	28.8.17	18:30	STG-1 taken out of DC due to condenser cleaning
28.8.17	18:30	31.8.17	23:59	After clearance fromMecncial maintenance M/c is available but not taken on load due to low schedule from SLDC.		

Unit No	Capacity in MW	Outage		Synchronization		Reason of Outage
		Date	Time	Date	Time	
STG -2	30	1.4.17	11:39	1.4.17	19:25	Machine stopped to attend hot spot on R-Phase Line Isolator.
		4.4.17	00:00	30.4.17	07:00	Machine stopped due to low demand on CCNG from SLDC
		30.4.17	07:00	30.4.17	19:15	machine was not available due to non availability of cooling water as there was leakage from CW return line for which plant shut down was taken.
		30.4.17	19:15	05.06.17	23:02	Machine could not taken on load due to no schedule from SLDC on CC Spot R-LNG
		6.6.17	22:13	4.8.17	20:32	machine stopped as there was no schedule on CC SPOT.
		4.8.17	20:35	4.8.17	22:05	All of sudden load became zero and machine tripped manually.
		4.8.17	22:20	5.8.17	18:50	machine stopped as local operator informed about heavy steam leakage from MS-114 Valve.
		5.8.17	20:26	10.8.17	15:00	Suddenly machine tripped on multiple alram on BCD. Alram s like ESV closed and both boiler trip.
		10.8.17	15:00	26.8.17	03:00	After clearance from C&I machine is available but not taken on load due to low schedule from SLDC.
		26.8.17	03:00	26.8.17	16:45	Machine not available due to work in CW Inlet valve of STG#1.
26.8.17	16:45	31.8.17	23:59	Machine is available but no schedule from SLDC on CCNG.		



Unit No	Capacity in MW	Outage		Synchronization		Reason of Outage
		Date	Time	Date	Time	
STG -3	30	28.3.17	18.45	24.4.17	18:00	Machine taken for Chemical Cleaning of Condensor
		24.4.17	18:00	30.4.17	07:00	Chemical Cleaning of Condensor completed but machine did not taken on load due to no schedule on CC Spot R-Lng from SLDC
		30.4.17	07:00	30.4.17	19:15	machine was not available due to non availability of cooling water as there was leakage from CW return line for which plant shut down was taken.
		30.4.17	19:15	1.5.15	11.22	Machine could not taken on load due to no schedule from SLDC on CC Spot R-LNG
		7.5.17	08:30	7.5.17	10:47	There was hunting in 24 Volt Charger Out put Voltage which leads to tripping of MCB of DDC panel CRB01,CRB02, CRC01,CRC03 & CJJ02. Due to this Operating parameters were not available at BCD as well as on CRT and subsequently machine tripped on Turbine Ch-I & Ch-II.
		24.5.17	11:25	01.06.17	13.15	Machine stopped as there was no schedule on CCNG
		1.6.17	13:00	5.6.17	13:15	Machine taken under PTW to attend leakage of steam from Main Steam Turbine Control valve.
		5.6.17	13:15	5.6.17	19:55	As per SLDC msg Machine taken on Bar.
		5.6.17	20:26	5.6.17	21:16	Machine tripped on Turbine RJB Vibration V.High
		11.6.17	12:37	11.6.17	14:59	Machine tripped on Turbine channel-1 & 2 operated.
		15.6.17	11:39	15.6.17	12:52	Machine tripped on Turbine channel-1 & 2 operated.
		16.6.17	03:49	13.07.17	17.22	Machine could not be taken on bar due to no schedule from SLDC on CC NG
		20.7.17	20:18	22.7.17	14:03	Stopped due to low demand and high frequency
		27.7.17	02:44	27.7.17	05:52	Machine tripped on Very High Drum level as the Drum level of HRSG# 5 could not be controlled . The other HRSG was tripped due to tripping of GT#6.
		28.7.17	10:42	28.7.17	12:42	Machine tripped as running Machine GT # 5 tripped on overspeed bolt alarm.
		28.7.17	19:18	28.7.17	20:06	Machine Tripped on Drum Level High
		28.7.17	20:54	28.7.17	22:21	Machine Tripped on Class A Trip relay operated
		5.8.17	20:08	6.8.17	04:00	Machine stopped as per SLDC message due to low demand on CCNG.
		10.8.17	13:18	10.8.17	14:18	Machine tripped due to disturbance in Pragati 220 KV I.P Ext Grid.
		17.8.17	23:28	18.8.17	03:38	Machine tripped on exhaust pressure very high. Vaccum stars decreasing slowly and machine tripped when the value og vaccum was -0.78 Kg/Cm2. Both high and very high alarm appeared same time.
20.8.17	07:10	20.8.17	11:10	Machine tripped due to Turbine Ch-1 & Ch-2 operated, Diff. expansion V.High and V.high, Turbine Brg. Temp and Generator bearing temp v.high alarm also appeared on BCD pannel. It was found that BK card failed and same was replaced.		
26.8.17	03:11	26.8.17	21:15	Machine stopped to attend CW Inlet Valve of STG #1.		

(C) **PRAGATI**

Unit No	Capacity in MW	Outage		Synchronization		Reason of Outage
		Date	Time	Date	Time	
1	104	17.02.17	12.10	01.04.17	11.36	Unit tripped due to internal fault
		18.04.17	15.35	20.04.17	19.47	GT#2 swapped by GT#1 and started after getting schedule.
		27.04.17	00.39	02.06.17	12.36	Stopped due to low demand and high frequency
		02.06.17	19.34	05.06.17	14.20	
		07.06.17	10.34	13.06.17	15.49	
		16.06.17	07.27	17.06.17	09.51	
		20.06.17	11.08	11.07.17	17.48	
		11.07.17	16.17	27.07.17	11.26	
		07.08.17	12.03	11.08.17	12.33	Unit tripped due to internal fault
		14.08.17	07.37	14.08.17	12.12	
		15.08.17	16.46	15.08.17	21.30	
		15.08.17	21.30	16.08.17	11.03	GT#1 remain stopped due to no schedule and started after getting schedule.
		22.08.17	11.24	22.08.17	12.09	Unit tripped due to internal fault

Unit No	Capacity in MW	Outage		Synchronization		Reason of Outage
		Date	Time	Date	Time	
2	104	01.04.17	13.14	06.04.17	09.00	GT#2 swapped by GT#1
		06.04.17	09.00	06.04.17	19.00	GT#2 was unavailable for Planned Maintenance
		06.04.17	19.00	18.04.17	14.05	Stopped due to low demand and high frequency
		17.06.17	09.01	17.06.17	12.00	Stopped due to internal fault.
		17.06.17	12.00	21.06.17	05.40	Stopped due to low demand and high frequency
		01.08.17	08.58	01.08.17	11.15	Tripped due to as pressure low
		01.08.17	13.47	01.08.17	18.10	Unit tripped due to internal fault
08.08.17	07.08	08.08.17	08.25			

Unit No	Capacity in MW	Outage		Synchronization		Reason of Outage
		Date	Time	Date	Time	
STG	122	24.04.17	09.33	27.04.17	10.49	STG tripped on internal fault.
		24.05.17	10.38	24.05.17	12.12	
		17.06.17	09.03	17.06.17	11.18	Desynchronized as G.T.-2 tripped on internal fault.
		20.06.17	11.08	21.06.17	08.45	Stopped due to low demand and high frequency
		08.08.17	07.08	08.08.17	09.50	Unit tripped due to internal fault
		25.08.17	17.23	25.08.17	18.54	Unit stopped to attend internal fault

**(D) BADARPUR THERMAL POWER STATION**

Unit	Capacity in MW	Outage		Synchronization		Reason of Outage
		Date	Time	Date	Time	
1	95	20.11.14	00.00	31.08.17	23.59	Not in operation due to not meeting pollution norms.

Unit	Capacity in MW	Outage		Synchronization		Reason of Outage
		Date	Time	Date	Time	
2	95	24.09.15	19.52	31.08.17	23.59	Not in operation due to not meeting pollution norms.

Unit	Capacity in MW	Outage		Synchronization		Reason of Outage
		Date	Time	Date	Time	
3	95	09.10.15	01.00	31.08.17	23.59	Not in operation due to not meeting pollution norms.

Unit	Capacity in MW	Outage		Synchronization		Reason of Outage
		Date	Time	Date	Time	
4	210	04.04.17	05.17	17.04.17	07.13	Stopped due to low demand and high frequency
		29.04.17	10.37	29.04.17	12.42	Generator protection
		06.05.17	18.08	06.05.17	22.49	Hot spot on GT Bushing
		31.05.17	14.00	05.06.17	07.31	Stopped due to low demand and high frequency
		23.06.17	21.27	25.06.17	10.45	Stopped due to water wall leakage BTL.
		25.06.17	10.45	26.06.17	05.20	AVR excitation problem.
		07.07.17	18.12	08.07.17	20.10	Water wall leakage
10.08.17	03.17	10.08.17	06.38	UTT/ST Problem.		

Unit	Capacity in MW	Outage		Synchronization		Reason of Outage
		Date	Time	Date	Time	
5	210	21.12.16	00.00	04.04.17	01.39	Stopped due to low demand and high frequency
		13.05.17	14.44	14.05.17	00.05	PA Fan 5A motor shaft shared
		14.05.17	00.06	14.05.17	05.34	Generation excitation low
		27.05.17	19.15	28.05.17	11.30	Stopped due to low demand and high frequency
		28.05.17	11.30	29.05.17	07.36	
		29.06.17	19.56	03.07.17	10.38	

**(E) BAWANA CCGT POWER STATION**

Unit	Capacity in MW	Outage		Synchronization		Reason of Outage
		Date	Time	Date	Time	
1	216	07.02.17	19:20	09.05.17	15:32	low or No scheduling of Bawana. (Trial Run)
		09.05.17	16:47	10.05.17	4:30	low or No scheduling of Bawana. (Trial Run)
		10.05.17	13:21	12.05.17	5:40	Stopped due to low demand and high frequency
		21.05.17	16:48	21.05.17	18:30	Black Out (Grid Restore@ 18:30 hrs.)
		21.05.17	18:30	24.05.17	10:18	Stopped due to low demand and high frequency
		31.05.17	20:15	16.06.17	16:50	
		16.06.17	00:00	16.06.17	16:50	
		17.06.17	19:30	17.06.17	7:41	
		19.06.17	17:39	19.06.17	8:11	
		23.06.17	19:01	23.06.17	8:05	
		25.06.17	12:35	25.06.17	6:54	
		06.08.17	12:32	06.08.17	14:44	Due to some maintenance work unit was taken out.
		07.08.17	12:39	07.08.17	14:27	Mixing of 220V AC & 110 DC.
19.08.17	17:40	24.08.17	08:23	low or No scheduling of Bawana .		

Unit	Capacity in MW	Outage		Synchronization		Reason of Outage
		Date	Time	Date	Time	
2	216	08.12.16	06:35	31.05.17	16:52	Stopped due to low demand and high frequency
		03.06.17	12:04	05.07.17	13:47	
		23.07.17	13:57	24.07.17	16:19	
		04.08.17	11:30	04.08.17	18:30	Tripped due to internal fault
		07.08.17	12:41	08.08.17	10:43	Stopped due to low demand and high frequency
		29.08.17	12:00	29.08.17	23:59	

Unit	Capacity in MW	Outage		Synchronization		Reason of Outage
		Date	Time	Date	Time	
STG-1	254	07.02.17	19:24	09.05.17	18:00	Minor Overhauling.(DC introduced w.e.f.18:00 hrs.)
		09.05.17	18:00	12.05.17	15:19	Stopped due to low demand and high frequency
		21.05.17	16:48	21.05.17	18:30	Black Out (Grid Restore@ 18:30 hrs.)
		21.05.17	18:30	24.05.17	9:01	Turbine Roter mtc.
		24.05.17	9:01	24.05.17	16:13	Stopped due to low demand and high frequency
		26.05.17	2:35	26.05.17	3:27	Due to AVR trouble alarm, Master relay operated and caused Generator Circuit Breaker of STG#1 to open. "Load shed detected" appeared in alarm list.
		31.05.17	5:13	31.05.17	7:26	Due to AVR trouble alarm, Master relay operated and caused Generator Circuit Breaker of STG#1 to open. "Load shed detected" appeared in alarm list. Malfunction of one Digital Input card which generates this signal was suspected.
		31.05.17	13:25	31.05.17	16:30	Due to AVR trouble alarm, Master relay operated and caused Generator Circuit Breaker of STG#1 to open. "Load shed detected" appeared in alarm list. Malfunctioning of OverVoltage Relay circuit generated this AVR Trouble alarm which caused Master Relay to operate.
		03.06.17	12:04	19.06.17	14:05	Stopped due to low demand and high frequency
		19.06.17	18:55	25.06.17	12:32	
		07.08.17	00:00	07.08.17	19:58	

Unit	Capacity in MW	Outage		Synchronization		Reason of Outage
		Date	Time	Date	Time	
3	216	15.04.17	16:06	03.05.17	16:55	Stopped due to low demand and high frequency
		04.05.17	00:12	04.05.17	02:32	When lead selection was given to AOP-2, as per logic, AOP-1 stopped. But Pr. Transmitter sensed a dip in the lube oil pressure causing tripping of GT#3. AOP-1 came back in service with a time delay of 4 sec after command from Mark-VI.
		06.05.17	00:15	13.06.17	17:07	Stopped due to low demand and high frequency
		13.06.17	20:30	31.08.17	23:59	

Unit	Capacity in MW	Outage		Synchronization		Reason of Outage
		Date	Time	Date	Time	
4	216	01.04.17	11.25	24.05.17	05.23	Stopped due to low demand and high frequency
		24.05.17	14.16	03.06.17	18.26	
		06.06.17	17.35	06.06.17	22.06	Due to Burning of PT circuit wire caused unbalance of voltage in relay thereby resulting in Stator Earth Fault.
		13.06.17	14.42	13.06.17	19.23	It was suspected that probably a mixing of AC & DC signals occurred instantaneously in the DDC panel (CRE 43 & 44) which controls the operations of all the Breakers from the remote (ECP/ OWS System), without any process command which resulted in instantaneous Trip command to Breakers.
		25.06.17	13.32	19.08.17	06.17	Due to changeover the machine.

Unit	Capacity in MW	Outage		Synchronization		Reason of Outage
		Date	Time	Date	Time	
STG-2	254	03.05.17	17.40	03.05.17	19.05	While checking the operation of LPBP of HRSG-3 inadvertently the CV got fully opened causing condenser vacuum to drop rapidly and STG-2 tripped on Low Condenser Vacuum
		12.05.17	17.30	04.06.17	00.14	Stopped due to low demand and high frequency
		04.06.17	14.38	04.06.17	17.00	Malfunction of DVR system apprehended which caused Field Breaker to open. The probable reason which would have caused this problem was the high ambient temperature inside the Thyristor Panel Room.
		04.06.17	18.39	04.06.17	21.34	Again Malfunction of DVR system apprehended which caused Field Breaker to open. The probable reason which would have caused this problem was the high ambient temperature inside the Thyristor Panel Room.
		06.06.17	17.35	07.06.17	01.18	Burning of PT circuit wire caused unbalance of voltage in relay thereby resulting in Stator Earth Fault.
		25.06.17	13.37	19.08.17	17.09	Stopped due to low demand and high frequency
		28.08.17	11.40	28.08.17	13.09	Tripped due to internal fault

**(F) RITHALA POWER STATION**

Unit	Capacity in MW	Outage		Synchronization		Reason of Outage
		Date	Time	Date	Time	
1	31.8	19.03.13	17:32	31.08.17	23.59	Stopped due to low demand and high frequency

Unit	Capacity in MW	Outage		Synchronization		Reason of Outage
		Date	Time	Date	Time	
2	31.8	07.06.13	22:41	31.08.17	23.59	Stopped due to low demand and high frequency

Unit	Capacity in MW	Outage		Synchronization		Reason of Outage
		Date	Time	Date	Time	
STG	31.8	07.06.13	22:38	31.08.17	23.59	Stopped due to low demand and high frequency

#### 4 ALLOCATION OF POWER TO DELHI

A) Time block 00.00hrs. to 24.00hrs. @ 0% allocation from Unallocated Quota from 01.04.2016

Name of the Stn	Installed capacity	Total Un-allocated	Basic Allocation	Basic Allocation at periphery	Allocation out of Unallocated Quota	Allocation out of Un-allocation Quota at Delhi periphery	Total allocation at Delhi periphery
1	2	3	4	5	6	7	(8)=(5)+(7)
<b><u>NTPC STATIONS</u></b>							
Singrauli STPS	2000	300	150	130	0	0	130
Rihand-I	1000	150	100	87	0	0	87
Rihand Stage -II	1000	150	126	109	0	0	109
Rihand Stage -III	1000	150	132	115	0	0	115
ANTA GPS	419	63	44	41	0	0	41
Auriya GPS	663.36	99	72	67	0	0	67
Dadri GPS	829.78	129	91	85	0	0	85
Dadri NCTPS (Th)	840	0	756	657	0	0	657
Dadri NCTPS (Th) Stage-II	980	147	735	639	0	0	639
Unchahaar-I TPS	420	20	24	21	0	0	21
Unchahaar-II TPS	420	63	47	41	0	0	41
Unchahaar-III TPS	210	31	29	25	0	0	25
Koldam HEP	800	120	56	53	0	0	53
<b>TOTAL</b>	<b>10582</b>	<b>1422</b>	<b>2362</b>	<b>2069</b>	<b>0</b>	<b>0</b>	<b>2069</b>
<b><u>NHPC</u></b>							
Baira Suil HPS	180	0	20	19	0	0	19
Salal HPS	690	0	80	76	0	0	76
Tanakpur HEP	94	0	12	11	0	0	11
Chamera HEP	540	0	43	41	0	0	41
Chamera-II HEP	300	54	40	38	0	0	38
Chamera-III HEP	231	35	29	28	0	0	28
URI-I HEP	480	0	53	50	0	0	50
URI-II HEP	240	0	32	31	0	0	31
Sewa HEP	120	18	16	15	0	0	15
Dhaulti Ganga HEP	280	42	37	35	0	0	35
Dulhasti HEP	390	58	50	48	0	0	48
Parbati-III HEP	520	66	66	63	0	0	63
<b>TOTAL</b>	<b>4065</b>	<b>272</b>	<b>479</b>	<b>455</b>	<b>0</b>	<b>0</b>	<b>455</b>
<b><u>NPC</u></b>							
Narora APS	440	64	47	41	0	0	41
RAPP (C)	440	64	56	49	0	0	49
<b>TOTAL</b>	<b>880</b>	<b>128</b>	<b>103</b>	<b>89</b>	<b>0</b>	<b>0</b>	<b>89</b>
<b><u>SVJNL</u></b>							
Nathpa Jhakri HEP	1500	149	142	135	0	0	135
<b><u>THDC</u></b>							
Tehri Hydro	1000	99	63	60	0	0	60
Koteshwar HEP	400	40	39	37	0	0	37
<b>TOTAL</b>	<b>1400</b>	<b>139</b>	<b>102</b>	<b>97</b>	<b>0</b>	<b>0</b>	<b>97</b>
<b>Total</b>	<b>18427</b>	<b>2110</b>	<b>3188</b>	<b>2846</b>	<b>0</b>	<b>0</b>	<b>2846</b>
<b><u>Allocation from ER and Tala HEP</u></b>							
Farakka	1600	0	22	19	0	0	19
Kahalgaon	840	0	51	43	0	0	43
Talchar	1000	0	0	0	0	0	0
Tala HEP	1020	153	30	25	0	0	25
Kahalgaon-II	1500	0	157	131	0	0	131
<b>Total ER</b>	<b>5960</b>	<b>153</b>	<b>261</b>	<b>217</b>	<b>0</b>	<b>0</b>	<b>217</b>
<b><u>Joint Venture</u></b>							
Jhajjar TPS	1500	114	643	577	0	0	577
<b><u>Ultra Mega Projects</u></b>							
Sasan	3960	0	446	383	0	0	383
<b>Grand Total</b>	<b>29847</b>	<b>2377</b>	<b>4536</b>	<b>4023</b>	<b>0</b>	<b>0</b>	<b>4023</b>

## 5 ALLOCATION OF POWER TO DISCOMS

A) ALLOCATION OF POWER TO VARIOUS LICENCEES AS PER ORDER OF DERC AND DECISION OF GNCTD FOR ALLOCATION OF CENTRAL SECTOR STATIONS (DADRI THERMAL & BTPS) AND STATE SECTOR GENERATING STATIONS w.e.f. 06.08.2013.

(Allocation In % )

### (A) 10.00hrs. to 17.00hrs.

SOURCES	LICENSEES					
	NDMC	MES	NDPL	BRPL	BYPL	TOTAL
1. Central Sector without Dadri (Th)	0	0	29.18	43.58	27.24	100.00
2. Dadri (Th)	16.63	0	24.22	36.86	22.39	100.00
3. BTPS	17.73	7.09	21.81	33.2	20.17	100.00
4. RPH	0	0	29.025	44.133	26.842	100.00
5. GT	0	0	29.02	44.16	26.82	100.00
6. Pragati	30.3	0	20.22	30.78	18.7	100.00
7. DVC	0	0	29.18	43.58	27.24	100.00
8. BAWANA CCGT*	7.30	1.82	20.688	30.888	19.304	80.00

### (B) 00.00hrs. to 10.00hrs. and 17.00hrs. to 24.00hrs.

SOURCES	LICENSEES					
	NDMC	MES	NDPL	BRPL	BYPL	TOTAL
1. Central Sector without Dadri (Th)	0	0	29.18	43.58	27.24	100.00
2. Dadri (Th)	16.53	0	24.22	36.86	22.39	100.00
3. BTPS	17.73	7.09	21.81	33.2	20.17	100.00
4. RPH	0	0	29.025	44.133	26.842	100.00
5. GT	0	0	29.02	44.16	26.82	100.00
6. Pragati	30.3	0	20.22	30.78	18.7	100.00
7. DVC	0	0	29.18	43.58	27.24	100.00
8. BAWANA CCGT*	7.30	1.82	20.688	30.888	19.304	80.00

\* 20% POWER OF BAWANA CCGT ALLOCATED TO HARYANA (10%) & PUNJAB (10%)

**6 POWER AVAILABILITY-DEMAND POSITION AT THE TIME OF PEAK DEMAND MET DURING AUGUST 2017**

Date	Time of peak demand	Generation within Delhi										Import from the Grid	Schedule from the Grid	OD(-) / UD(+)	Demand met	Shedding	Un-Restricted Demand
		RP H	GT	PPCL	Rithala	Bawana	Towmcl	East Delhi	DMS WL	BTPS	Total						
(1)	(2)	(3)	(4)	(5)	(6)	(7)	(8)				(9)= (3) to (8)	(10)	(11)	(12)= (11) - (10)	(13)= (11)+ (12)	(14)	(15)= (13)+ (14)
1	15.30.24	0	35	145	0	420	11	3	12	332	958	4030	4019	11	4988	0	4988
2	22.56.37	0	36	267	0	423	9	2	10	324	1071	3943	3973	-30	5014	0	5014
3	15.25.45	0	36	264	0	428	11	3	9	327	1078	4314	4188	126	5392	0	5392
4	22.56.00	0	36	259	0	442	11	2	5	324	1079	4336	4394	-58	5415	2	5417
5	22.59.57	0	24	259	0	431	11	-1	3	330	1057	4283	4204	79	5340	0	5340
6	22.57.51	0	34	259	0	499	11	0	3	332	1138	4298	4321	-23	5436	0	5436
7	00.00.55	0	34	259	0	428	12	0	2	328	1063	4234	4160	74	5297	0	5297
8	22.47.39	0	36	151	0	571	11	-1	3	327	1098	4383	4432	-49	5481	0	5481
9	22.56.47	0	36	151	0	442	11	-1	12	324	975	4307	4322	-15	5282	0	5282
10	22.32.34	0	33	148	0	592	11	0	17	321	1122	4471	4536	-65	5593	0	5593
11	15.30.00	0	72	296	0	428	10	0	14	332	1152	4475	4479	-4	5627	34	5661
12	00.02.02	0	139	261	0	426	18	0	9	330	1183	4061	4096	-35	5244	0	5244
13	22.57.23	0	73	258	0	434	14	0	14	329	1122	4139	4119	20	5261	0	5261
14	23.18.29	0	74	274	0	431	16	-1	16	332	1142	4279	4163	116	5421	0	5421
15	00.00.16	0	74	269	0	427	16	0	16	327	1129	4163	4035	128	5292	0	5292
16	22.43.39	0	75	260	0	504	10	4	7	326	1186	4673	4418	255	5859	0	5859
17	22.46.39	0	76	298	0	614	8	5	7	330	1338	4715	4805	-90	6053	16	6069
18	22.50.57	0	77	259	0	570	12	3	6	320	1247	4882	4879	3	6129	4	6133
19	00.00.11	0	76	258	0	567	12	6	9	319	1247	4681	4627	54	5928	0	5928
20	23.01.00	0	76	262	0	484	19	3	16	327	1187	4374	4278	96	5561	0	5561
21	22.55.08	0	77	259	0	490	19	3	14	316	1178	4651	4604	47	5829	0	5829
22	23.03.03	0	74	262	0	484	16	5	17	327	1185	4416	4483	-67	5601	0	5601
23	00.00.03	0	74	264	0	434	17	5	17	323	1134	4258	4268	-10	5392	0	5392
24	22.55.59	0	65	259	0	451	18	3	16	320	1132	4332	4407	-75	5464	0	5464
25	15.07.19	0	70	262	0	536	16	-1	14	323	1220	4205	4278	-73	5425	0	5425
26	15.26.25	0	0	259	0	431	17	0	16	329	1052	3904	3963	-59	4956	0	4956
27	23.00.00	0	38	259	0	430	16	-1	17	323	1082	4023	3974	49	5105	2	5107
28	00.00.00	0	38	262	0	431	17	-1	15	324	1086	3923	3871	52	5009	0	5009
29	23.13.39	0	38	258	0	433	12	3	15	325	1084	4207	4141	66	5291	0	5291
30	15.17.55	0	38	260	0	431	13	3	16	319	1080	4207	4257	-50	5287	0	5287
31	12.21.21	0	35	256	0	552	16	3	14	321	1197	3820	3662	158	5017	5	5022

**POWER AVAILABILITY- DEMAND POSITION AT THE TIME OF MAXIMUM UNRESTRICTED DEMAND DURING AUGUST 2017**

Date	Time of peak demand	Generation within Delhi										Import from the Grid	Schedule from the Grid	OD(-)/UD(+)	Demand met	Shedding	Un-Restricted Demand
		RP H	GT	PPCL	Rithala	Bawana	Towmcl	East Delhi	DMS WL	BTPS	Total						
(1)	(2)	(3)	(4)	(5)	(6)	(7)	(8)				(9)= (3) to (8)	(10)	(11)	(12)= (11) - (10)	(13)= (11)+ (12)	(14)	(15)= (13)+ (14)
1	15.30.24	0	35	145	0	420	11	3	12	332	958	4030	4019	11	4988	0	4988
2	22.56.37	0	36	267	0	423	9	2	10	324	1071	3943	3973	-30	5014	0	5014
3	15.25.45	0	36	264	0	428	11	3	9	327	1078	4314	4188	126	5392	0	5392
4	22.56.00	0	36	259	0	442	11	2	5	324	1079	4336	4394	-58	5415	2	5417
5	22.59.57	0	24	259	0	431	11	-1	3	330	1057	4283	4204	79	5340	0	5340
6	22.57.51	0	34	259	0	499	11	0	3	332	1138	4298	4321	-23	5436	0	5436
7	00.00.55	0	34	259	0	428	12	0	2	328	1063	4234	4160	74	5297	0	5297
8	22.47.39	0	36	151	0	571	11	-1	3	327	1098	4383	4432	-49	5481	0	5481
9	22.56.47	0	36	151	0	442	11	-1	12	324	975	4307	4322	-15	5282	0	5282
10	22.32.34	0	33	148	0	592	11	0	17	321	1122	4471	4536	-65	5593	0	5593
11	15.30.00	0	72	296	0	428	10	0	14	332	1152	4475	4479	-4	5627	34	5661
12	00.02.02	0	139	261	0	426	18	0	9	330	1183	4061	4096	-35	5244	0	5244
13	22.57.23	0	73	258	0	434	14	0	14	329	1122	4139	4119	20	5261	0	5261
14	23.18.29	0	74	274	0	431	16	-1	16	332	1142	4279	4163	116	5421	0	5421
15	00.00.16	0	74	269	0	427	16	0	16	327	1129	4163	4035	128	5292	0	5292
16	22.43.39	0	75	260	0	504	10	4	7	326	1186	4673	4418	255	5859	0	5859
17	22.46.39	0	76	298	0	614	8	5	7	330	1338	4715	4805	-90	6053	16	6069
18	22.50.57	0	77	259	0	570	12	3	6	320	1247	4882	4879	3	6129	4	6133
19	00.00.11	0	76	258	0	567	12	6	9	319	1247	4681	4627	54	5928	0	5928
20	23.01.00	0	76	262	0	484	19	3	16	327	1187	4374	4278	96	5561	0	5561
21	22.55.08	0	77	259	0	490	19	3	14	316	1178	4651	4604	47	5829	0	5829
22	23.03.03	0	74	262	0	484	16	5	17	327	1185	4416	4483	-67	5601	0	5601
23	00.00.03	0	74	264	0	434	17	5	17	323	1134	4258	4268	-10	5392	0	5392
24	22.55.59	0	65	259	0	451	18	3	16	320	1132	4332	4407	-75	5464	0	5464
25	15.07.19	0	70	262	0	536	16	-1	14	323	1220	4205	4278	-73	5425	0	5425
26	15.26.25	0	0	259	0	431	17	0	16	329	1052	3904	3963	-59	4956	0	4956
27	23.00.00	0	38	259	0	430	16	-1	17	323	1082	4023	3974	49	5105	2	5107
28	00.00.00	0	38	262	0	431	17	-1	15	324	1086	3923	3871	52	5009	0	5009
29	23.13.39	0	38	258	0	433	12	3	15	325	1084	4207	4141	66	5291	0	5291
30	15.17.55	0	38	260	0	431	13	3	16	319	1080	4207	4257	-50	5287	0	5287
31	12.21.21	0	35	256	0	552	16	3	14	321	1197	3820	3662	158	5017	5	5022



**SOURCEWISE SCHEDULED DRAWL FROM NORTHERN GRID AS WELL AS AVAILABILITY WITHIN DELHI FOR AUGUST 2017**

**A) AVAILABILITY FROM GENCO AND PRAGATI STNs. (all fig in MUs)**

A (i) RPH	0.000
(ii) GT+STG	41.223
(iii) PRAGATI	187.271
(iv) RITHALA	0.000
(v) BAWANA CCGT	332.632
(vi) Timarpur – Okhla	13.170
EDWPCL	1.925
DMSWL	10.232
TOTAL	586.453
B) AVAILABILITY FROM BTPS	239.858
C) AUXILIARY CONSUMPTION OF GENERATING STNs. EXCLUDING BTPS	23.859
D) NET GENERATION AVAILABLE WITHIN DELHI(A+B-C)	802.452

**B) SOURCE WISE SCHEDULED DRAWL FROM THE NORTHERN GRID**

NAME OF THE STATION	AVAILABILITY AT POWER PLANT	AVAILABILITY AT DELHI PERIPHERY	ALLOCATION MADE BY NRLDC AT POWER PLANT	ALLOCATION MADE BY NRLDC AT DELHI PERIPHERY
B/SUIL	8.674	8.487	8.674	8.487
SALAL	56.162	54.947	56.162	54.947
SASAN	246.476	241.140	239.827	234.634
TANKAPUR	7.772	7.604	7.772	7.604
CHAMERA	27.239	26.652	27.239	26.652
CHAMERA -II	28.576	27.958	28.576	27.958
CHAMERA -III	20.335	19.896	20.335	19.896
DHAULIGANGA	26.508	25.935	26.508	25.935
SEWA -2	7.395	7.236	7.395	7.236
URI	30.237	29.586	30.237	29.586
URI-II	19.318	18.901	19.300	18.884
KOLDAM	0.000	0.000	0.000	0.000
KOTESHWAR	18.618	18.218	18.618	18.218
PARBATI3	18.383	17.987	18.383	17.987
RAMPUR	0.000	0.000	0.000	0.000
MUNDRA_UMPP	0.000	0.000	0.000	0.000
ANTA (GAS)	4.000	3.912	0.709	0.693
ANTA (RLNG)	0.000	0.000	0.000	0.000
ANTA (LIQUID)	26.541	25.968	0.000	0.000
DADRI (GAS)	14.573	14.257	2.692	2.633
DADRI (RLNG)	0.000	0.000	0.000	0.000
DADRI (LIQUID)	47.936	46.898	0.085	0.083
AURAIYA (GAS)	0.000	0.000	0.000	0.000
AURAIYA (RLNG)	0.000	0.000	0.000	0.000
AURAIYA (LIQUID)	49.513	48.441	0.000	0.000
SINGRAULI	94.439	92.392	81.820	80.047
RIHAND -I	44.940	43.967	40.700	39.818
RIHAND -II	86.845	84.964	82.090	80.312
RIHAND -III	87.239	85.343	76.887	75.215
UNCHAHAAR-I	16.271	15.919	10.288	10.065
UNCHAHAAR-II	31.880	31.190	20.750	20.300
UNCHAHAAR-III	19.723	19.297	13.154	12.868
DADRI (TH)	394.574	386.036	166.236	162.641
DADRI (TH) STAGE-II	451.940	442.126	322.410	315.421
NAPP	28.666	28.043	28.666	28.043
RAPP 'B'	0.000	0.000	0.000	0.000
RAPP 'C'	39.190	38.342	39.190	38.342
NATHPA JHAKRI	96.552	94.462	72.027	70.468
DULASTI	34.913	34.157	34.913	34.157
TEHRI	32.027	31.340	32.027	31.340
JHAJJAR	291.518	285.208	179.237	175.351

NAME OF THE STATION	AVAILABILITY AT POWER PLANT	AVAILABILITY AT DELHI PERIPHERY	ALLOCATION MADE BY NRLDC AT POWER PLANT	ALLOCATION MADE BY NRLDC AT DELHI PERIPHERY
KHELGAON	33.052	32.336	17.517	17.136
KHELGAON-II	110.336	107.948	73.864	72.261
FARAKA	12.436	12.167	6.265	6.129
TALA	22.687	22.196	22.687	22.196
TALCHER	0.000	0.000	0.000	0.000
DVC	222.057	220.126	220.126	215.355
UTTRANCHAL	0.287	0.283	0.283	0.277
CHATTISHGARH	5.610	5.505	5.505	5.386
MEGHALAYA	40.086	39.657	39.657	38.796
GOA	8.989	8.913	8.913	8.720
ANDHRA	49.199	48.772	48.772	47.705
MADHYA PRADESH	12.073	11.965	11.965	11.710
METHON POWER(NDPL)LT-06	145.450	144.182	144.182	141.050
DVC MEJIA (LT-08)(BYPL)	67.572	66.982	66.982	65.533
URS	1.649	1.615	1.649	1.615
JAMMU & KASHMIR	120.764	120.119	120.119	117.519
HIMACHAL PRADESH	272.919	269.513	269.513	263.686
ASSAM	11.217	11.148	11.148	10.907
RAJASTHAN	0.282	0.278	0.278	0.272
ORISSA	13.473	13.360	13.360	13.085
DVC LT-9	0.000	0.000	0.000	0.000
HARYANA (LT-05)	53.303	53.019	53.019	51.872
JHARKHAND	10.250	10.190	10.190	9.969
MAHARASHTRA	22.437	22.087	22.087	21.610
MANIPUR	1.009	0.999	0.999	0.977
RAJASTHAN(SOLAR) BRPL-LT36	3.496	3.452	3.452	3.378
RAJASTHAN(SOLAR) BYPL - LT-35	3.424	3.381	3.381	3.308
RAJASTHAN(SOLAR) TPDDL LT-31	3.342	3.301	3.301	3.229
TO JHARKHAND	0.000	0.000	0.000	0.000
TO ANDHRA	0.000	0.000	0.000	0.000
TO WEST BENGAL	0.000	0.000	0.000	0.000
TO MAHARASHTRA	0.000	0.000	0.000	0.000
TO UTTAR PRADESH	-5.950	-6.094	-6.094	-6.229
TO UTTRANCHAL	0.000	0.000	0.000	0.000
TO GOA	0.000	0.000	0.000	0.000
TO BIHAR	0.000	0.000	0.000	0.000
TO RAJASTHAN	0.000	0.000	0.000	0.000
TO TRIPURA	-2.149	-2.162	-2.162	-2.211
BTPS TO MP	0.000	0.000	0.000	0.000
TO HIMACHAL PRADESH	-2.669	-2.704	-2.704	-2.765
TO HARYANA	-1.624	-1.652	-1.652	-1.688
POWER EXCHANGE(IEX)	38.653	37.820	38.653	37.820
TO POWER EXCHANGE (IEX)	-137.644	-140.707	-137.644	-140.707
POWER EXCHANGE(PX)	0.000	0.000	0.000	0.000
TO POWER EXCHANGE (PX)	0.000	0.000	0.000	0.000
TO SHARE PROJECT (HARYANA)	-29.799	-30.458	-29.799	-30.458
TO SHARE PROJECT (PUNJAB)	-29.799	-30.458	-29.799	-30.458
<b>TOTAL</b>	<b>3485.394</b>	<b>3413.885</b>	<b>2720.922</b>	<b>2652.807</b>

**C) AGENCY WISE BREAKUP OF ENERGY SCHEDULED DRAW FROM THE GRID**

NAME OF THE STATION	AVAILABILITY AT POWER PLANT	AVAILABILITY AT DELHI PERIPHERY	ALLOCATION MADE BY NRLDC AT POWER PLANT	ALLOCATION MADE BY NRLDC AT DELHI PERIPHERY
NTPC - NR	1370.413	1340.710	817.821	800.098
NTPC - ER	155.824	152.451	97.645	95.527
NHPC	285.513	279.344	285.494	279.328
NPC	67.856	66.385	67.856	66.385
SASAN	246.476	241.140	239.827	234.634
KOTESHWAR	18.618	18.218	18.618	18.218
MUNDRA_UMPP	0.000	0.000	0.000	0.000
NATHPA JHAKRI	96.552	94.462	72.027	70.468
TEHRI	32.027	31.340	32.027	31.340
TALA	22.687	22.196	22.687	22.196
JHAJJAR	291.518	285.208	179.237	175.351
TALCHER	0.000	0.000	0.000	0.000

NAME OF THE STATION	AVAILABILITY AT POWER PLANT	AVAILABILITY AT DELHI PERIPHERY	ALLOCATION MADE BY NRLDC AT POWER PLANT	ALLOCATION MADE BY NRLDC AT DELHI PERIPHERY
RAJASTHAN SOLAR(BRPL)T-36	3.496	3.452	3.452	3.378
RAJASTHAN SOLAR(BYPL)T-35	3.424	3.381	3.381	3.308
RAJASTHAN SOLAR(TPDDL)T-31	3.342	3.301	3.301	3.229
DVC	222.057	220.126	220.126	215.355
UTTRANCHAL	0.287	0.283	0.283	0.277
CHATTISHGARH	5.610	5.505	5.505	5.386
MEGHALAYA	40.086	39.657	39.657	38.796
GOA	8.989	8.913	8.913	8.720
ANDHRA	49.199	48.772	48.772	47.705
MADHYA PRADESH	12.073	11.965	11.965	11.710
METHON POWER (NDPL)-LT-06	145.450	144.182	144.182	141.050
DVC MEJIA (LT-08)(BYPL)	67.572	66.982	66.982	65.533
URS	1.649	1.615	1.649	1.615
JAMMU & KASHMIR	120.764	120.119	120.119	117.519
HIMACHAL PRADESH	272.919	269.513	269.513	263.686
ASSAM	11.217	11.148	11.148	10.907
RAJASTHAN	0.282	0.278	0.278	0.272
ORISSA	13.473	13.360	13.360	13.085
DVC (FOR NDPL) LT-09	0.000	0.000	0.000	0.000
HARYANA (LT -05)	53.303	53.019	53.019	51.872
JHARKHAND	10.250	10.190	10.190	9.969
MAHARASHTRA	22.437	22.087	22.087	21.610
MANIPUR	1.009	0.999	0.999	0.977
POWER EXCHANGE(IEX)	38.653	37.820	38.653	37.820
POWER EXCHANGE(PX)	0.000	0.000	0.000	0.000
<b>TOTAL</b>	<b>3695.027</b>	<b>3628.122</b>	<b>2930.777</b>	<b>2867.324</b>

**D) AGENCY WISE BREAKUP OF ENERGY SCHEDULED BY NRLDC FOR EXPORT TO OTHER UTILITIES FROM DTL**

NAME OF THE STATION	AVAILABILITY AT POWER PLANT	AVAILABILITY AT PERIPHERY	ALLOCATION MADE BY NRLDC AT POWER PLANT	ALLOCATION MADE BY NRLDC AT POWER PERIPHERY
TO JHARKHAND	0.000	0.000	0.000	0.000
TO ANDHRA	0.000	0.000	0.000	0.000
TO WEST BENGAL	0.000	0.000	0.000	0.000
TO MAHARASHTRA	0.000	0.000	0.000	0.000
TO UTTRANCHAL	0.000	0.000	0.000	0.000
TO UTTAR PRADESH	-5.950	-6.094	-6.094	-6.229
TO GOA	0.000	0.000	0.000	0.000
TO BIHAR	0.000	0.000	0.000	0.000
TO RAJASTHAN	0.000	0.000	0.000	0.000
TO TRIPURA	-2.149	-2.162	-2.162	-2.211
BTPS TO MP	0.000	0.000	0.000	0.000
TO HIMACHAL PRADESH	-2.669	-2.704	-2.704	-2.765
TO HARYANA	-1.624	-1.652	-1.652	-1.688
TO POWER EXCHANGE (IEX)	-137.644	-140.707	-137.644	-140.707
TO POWER EXCHANGE (PX)	0.000	0.000	0.000	0.000
TO SHARE PROJECT (HARYANA)	-29.799	-30.458	-29.799	-30.458
TO SHARE PROJECT (PUNJAB)	-29.799	-30.458	-29.799	-30.458
<b>TOTAL</b>	<b>-209.633</b>	<b>-214.237</b>	<b>-209.854</b>	<b>-214.517</b>
<b>TOTAL SCHEDULED DRAWAL FROM THE GRID</b>	<b>3485.394</b>	<b>3413.885</b>	<b>2720.922</b>	<b>2652.807</b>

TOTAL CONSUMPTION INCLUDING AUX. OF GENERATING STNs. EXCLUDING BTPS		3495.522
NET CONSUMPTION		<b>3471.663</b>
AVAILABILITY WITHIN DELHI		802.452
ACTUAL DRAWAL FROM THE GRID		2669.211
OVER DRAWAL(+)/UNDER DRAWAL(-) FROM THE GRID ON THE BASIS OF SCHEDULED ALLOCATION MADE BY NRLDC TO DELHI AT PERIPHERY		16.404
LOAD SHEDDING		2.402
UNRESTRICTED DEMAND (GROSS)		3497.924
UNRESTRICTED DEMAND (NET)		3474.065
MAX. NET CONSUMPTION		126.820 ON 18.08.2017
MAX. LOAD SHEDDING		233MW ON 11.08.2017 AT 11.22HRS.
<b>PEAK LOAD</b>	Peak Demand during the month	SHEDDING AT PEAK TIME
DAY PEAK	6003MW AT 15.15HRS ON 18.08.2017	0 MW
EVENING PEAK	6129MW AT 22.50.57HRS ON 18.08.2017	4 MW
P.L.F. OF GENCO AND PRAGATI STNs.	RPH GT PRAGATI RITHALA BAWANA Timarpur Okhla EDWPCL DMSWL	0.00% 20.52% 76.28% 0.00% 32.61% 110.64% 21.56% 57.30%

## SHEDDING DETAILS DURING THE MONTH OF AUGUST 2017.

ALL FIGURES IN MUs

DATE	No. of Under Freq. Relay Operated	Shedding due to under frequency relay operation in MUs					Shedding due to Grid Restrictions (Over drawl / low freq.)				
		BSES		NDPL	NDMC	TOTAL	BSES		NDPL	NDMC	MES
		BYPL	BRPL				BYPL	BRPL			
1	2	3	4	5	6	7=3 to 6	8	9	10	11	12
01.Aug.17	0	0.000	0.000	0.000	0.000	<b>0.000</b>	0.000	0.000	0.000	0.000	0.000
02.Aug.17	0	0.000	0.000	0.000	0.000	<b>0.000</b>	0.000	0.000	0.000	0.000	0.000
03.Aug.17	0	0.000	0.000	0.000	0.000	<b>0.000</b>	0.000	0.000	0.000	0.000	0.000
04.Aug.17	0	0.000	0.000	0.000	0.000	<b>0.000</b>	0.000	0.000	0.000	0.000	0.000
05.Aug.17	0	0.000	0.000	0.000	0.000	<b>0.000</b>	0.000	0.000	0.000	0.000	0.000
06.Aug.17	0	0.000	0.000	0.000	0.000	<b>0.000</b>	0.000	0.000	0.000	0.000	0.000
07.Aug.17	0	0.000	0.000	0.000	0.000	<b>0.000</b>	0.000	0.000	0.000	0.000	0.000
08.Aug.17	0	0.000	0.000	0.000	0.000	<b>0.000</b>	0.000	0.000	0.000	0.000	0.000
09.Aug.17	0	0.000	0.000	0.000	0.000	<b>0.000</b>	0.000	0.000	0.000	0.000	0.000
10.Aug.17	0	0.000	0.000	0.000	0.000	<b>0.000</b>	0.000	0.000	0.000	0.000	0.000
11.Aug.17	0	0.000	0.000	0.000	0.000	<b>0.000</b>	0.000	0.000	0.000	0.000	0.000
12.Aug.17	0	0.000	0.000	0.000	0.000	<b>0.000</b>	0.000	0.000	0.000	0.000	0.000
13.Aug.17	0	0.000	0.000	0.000	0.000	<b>0.000</b>	0.000	0.000	0.000	0.000	0.000
14.Aug.17	0	0.000	0.000	0.000	0.000	<b>0.000</b>	0.000	0.000	0.000	0.000	0.000
15.Aug.17	0	0.000	0.000	0.000	0.000	<b>0.000</b>	0.000	0.000	0.000	0.000	0.000
16.Aug.17	0	0.000	0.000	0.000	0.000	<b>0.000</b>	0.000	0.000	0.000	0.000	0.000
17.Aug.17	0	0.000	0.000	0.000	0.000	<b>0.000</b>	0.000	0.000	0.000	0.000	0.000
18.Aug.17	0	0.000	0.000	0.000	0.000	<b>0.000</b>	0.000	0.000	0.000	0.000	0.000
19.Aug.17	0	0.000	0.000	0.000	0.000	<b>0.000</b>	0.000	0.000	0.000	0.000	0.000
20.Aug.17	0	0.000	0.000	0.000	0.000	<b>0.000</b>	0.000	0.000	0.000	0.000	0.000
21.Aug.17	0	0.000	0.000	0.000	0.000	<b>0.000</b>	0.000	0.000	0.000	0.000	0.000
22.Aug.17	0	0.000	0.000	0.000	0.000	<b>0.000</b>	0.000	0.003	0.000	0.000	0.000
23.Aug.17	0	0.000	0.000	0.000	0.000	<b>0.000</b>	0.000	0.000	0.000	0.000	0.000
24.Aug.17	0	0.000	0.000	0.000	0.000	<b>0.000</b>	0.000	0.000	0.000	0.000	0.000
25.Aug.17	0	0.000	0.000	0.0001	0.000	<b>0.000</b>	0.000	0.000	0.000	0.000	0.000
26.Aug.17	0	0.000	0.000	0.000	0.000	<b>0.000</b>	0.000	0.000	0.000	0.000	0.000
27.Aug.17	0	0.000	0.000	0.000	0.000	<b>0.000</b>	0.000	0.000	0.000	0.000	0.000
28.Aug.17	0	0.000	0.000	0.000	0.000	<b>0.000</b>	0.000	0.000	0.000	0.000	0.000
29.Aug.17	0	0.000	0.000	0.000	0.000	<b>0.000</b>	0.000	0.000	0.000	0.000	0.000
30.Aug.17	0	0.000	0.000	0.000	0.000	<b>0.000</b>	0.000	0.000	0.000	0.000	0.000
31.Aug.17	0	0.000	0.000	0.000	0.000	<b>0.000</b>	0.000	0.000	0.000	0.000	0.000
<b>TOTAL</b>	<b>0.000</b>	<b>0.000</b>	<b>0.000</b>	<b>0.000</b>	<b>0.000</b>	<b>0.000</b>	<b>0.000</b>	<b>0.003</b>	<b>0.000</b>	<b>0.000</b>	<b>0.000</b>

ALL FIGURES IN MUs

Date	Shedding due to Transmission/Grid Constraints in Central Sector Stations / TTC / ATC VIOLATION				DUE TO NEW GRID CODE REGULATION DEVIATION			Shedding due to Transmission/Grid Constraints in Central sector stations				Total	Total shedding due to grid restrictions
	BSES		NDPL	NDMC	BSES		TPDDL	BSES		NDMC			
	BYPL	BRPL			BYPL	BRPL		BYPL	BRPL				
	13	14	15	16	17	18	19	20	21	22	23	24=8 to 23	25=7+24
01.Aug.17	0.000	0.000	0.000	0.000	0.000	0.000	0.000	0.000	0.000	0.000	0.000	0.000	0.000
02.Aug.17	0.000	0.000	0.000	0.000	0.000	0.000	0.000	0.000	0.000	0.000	0.000	0.000	0.000
03.Aug.17	0.000	0.000	0.000	0.000	0.000	0.000	0.000	0.000	0.000	0.000	0.000	0.000	0.000
04.Aug.17	0.000	0.000	0.000	0.000	0.000	0.000	0.000	0.000	0.000	0.000	0.000	0.000	0.000
05.Aug.17	0.000	0.000	0.000	0.000	0.000	0.000	0.000	0.000	0.000	0.000	0.000	0.000	0.000
06.Aug.17	0.000	0.000	0.000	0.000	0.000	0.000	0.000	0.000	0.000	0.000	0.000	0.000	0.000
07.Aug.17	0.000	0.000	0.000	0.000	0.000	0.000	0.000	0.000	0.000	0.000	0.000	0.000	0.000
08.Aug.17	0.000	0.000	0.000	0.000	0.000	0.000	0.000	0.000	0.000	0.000	0.000	0.000	0.000
09.Aug.17	0.000	0.000	0.000	0.000	0.000	0.000	0.000	0.000	0.000	0.000	0.000	0.000	0.000
10.Aug.17	0.000	0.000	0.000	0.000	0.000	0.000	0.000	0.000	0.000	0.000	0.000	0.000	0.000
11.Aug.17	0.000	0.000	0.000	0.000	0.000	0.000	0.000	0.000	0.000	0.000	0.000	0.000	0.000
12.Aug.17	0.000	0.000	0.000	0.000	0.000	0.000	0.000	0.000	0.000	0.000	0.000	0.000	0.000
13.Aug.17	0.000	0.000	0.000	0.000	0.000	0.000	0.000	0.000	0.000	0.000	0.000	0.000	0.000
14.Aug.17	0.000	0.000	0.000	0.000	0.000	0.000	0.000	0.000	0.000	0.000	0.000	0.000	0.000
15.Aug.17	0.000	0.000	0.000	0.000	0.000	0.000	0.000	0.000	0.000	0.000	0.000	0.000	0.000
16.Aug.17	0.000	0.000	0.000	0.000	0.000	0.000	0.000	0.000	0.000	0.000	0.000	0.000	0.000
17.Aug.17	0.000	0.000	0.000	0.000	0.000	0.000	0.000	0.000	0.000	0.000	0.000	0.000	0.000
18.Aug.17	0.000	0.000	0.000	0.000	0.000	0.000	0.000	0.000	0.000	0.000	0.000	0.000	0.000
19.Aug.17	0.000	0.000	0.000	0.000	0.000	0.000	0.000	0.000	0.000	0.000	0.000	0.000	0.000
20.Aug.17	0.000	0.000	0.000	0.000	0.000	0.000	0.000	0.000	0.000	0.000	0.000	0.000	0.000
21.Aug.17	0.000	0.000	0.000	0.000	0.000	0.000	0.000	0.000	0.000	0.000	0.000	0.000	0.000
22.Aug.17	0.000	0.000	0.000	0.000	0.000	0.000	0.000	0.000	0.000	0.000	0.000	0.003	0.003
23.Aug.17	0.000	0.000	0.000	0.000	0.000	0.000	0.000	0.000	0.000	0.000	0.000	0.000	0.000
24.Aug.17	0.000	0.000	0.000	0.000	0.000	0.000	0.000	0.000	0.000	0.000	0.000	0.000	0.000
25.Aug.17	0.000	0.000	0.000	0.000	0.000	0.000	0.000	0.000	0.000	0.000	0.000	0.000	0.000
26.Aug.17	0.000	0.000	0.000	0.000	0.000	0.000	0.000	0.000	0.000	0.000	0.000	0.000	0.000
27.Aug.17	0.000	0.000	0.000	0.000	0.000	0.000	0.000	0.000	0.000	0.000	0.000	0.000	0.000
28.Aug.17	0.000	0.000	0.000	0.000	0.000	0.000	0.000	0.000	0.000	0.000	0.000	0.000	0.000
29.Aug.17	0.000	0.000	0.000	0.000	0.000	0.000	0.000	0.000	0.000	0.000	0.000	0.000	0.000
30.Aug.17	0.000	0.000	0.000	0.000	0.000	0.000	0.000	0.000	0.000	0.000	0.000	0.000	0.000
31.Aug.17	0.000	0.000	0.000	0.000	0.000	0.000	0.000	0.000	0.000	0.000	0.000	0.000	0.000
<b>TOTAL</b>	<b>0.000</b>	<b>0.000</b>	<b>0.000</b>	<b>0.000</b>	<b>0.000</b>	<b>0.000</b>	<b>0.000</b>	<b>0.000</b>	<b>0.000</b>	<b>0.000</b>	<b>0.000</b>	0.003	<b>0.003</b>

Date	DUE TO T&D CONSTRAINTS IN DELHI SYSTEM								
	DTL					DISCOMS			
	BSES		NDPL	NDMC	MES	BSES		NDPL	NDMC
	BYPL	BRPL				BYPL	BRPL		
26	27	28	29	30	31	32	33	34	
01.Aug.17	0.000	0.025	0.000	0.000	0.000	0.000	0.009	0.000	0.000
02.Aug.17	0.000	0.000	0.001	0.000	0.000	0.006	0.037	0.000	0.000
03.Aug.17	0.000	0.002	0.000	0.000	0.000	0.018	0.002	0.002	0.000
04.Aug.17	0.000	0.019	0.000	0.000	0.000	0.000	0.184	0.002	0.000
05.Aug.17	0.000	0.001	0.000	0.000	0.000	0.000	0.046	0.000	0.000
06.Aug.17	0.006	0.000	0.000	0.000	0.000	0.015	0.000	0.002	0.000
07.Aug.17	0.000	0.000	0.004	0.000	0.000	0.000	0.136	0.000	0.000
08.Aug.17	0.000	0.006	0.000	0.000	0.000	0.007	0.036	0.000	0.000
09.Aug.17	0.000	0.000	0.000	0.000	0.000	0.000	0.060	0.002	0.000
10.Aug.17	0.000	0.000	0.002	0.000	0.000	0.000	0.018	0.016	0.000
11.Aug.17	0.201	0.144	0.000	0.019	0.000	0.000	0.028	0.005	0.000
12.Aug.17	0.000	0.000	0.000	0.000	0.000	0.003	0.029	0.001	0.000
13.Aug.17	0.000	0.000	0.000	0.000	0.000	0.009	0.019	0.005	0.000
14.Aug.17	0.000	0.001	0.005	0.000	0.000	0.003	0.000	0.000	0.000
15.Aug.17	0.006	0.002	0.000	0.000	0.000	0.001	0.041	0.008	0.000
16.Aug.17	0.002	0.131	0.000	0.000	0.000	0.044	0.085	0.005	0.000
17.Aug.17	0.001	0.000	0.028	0.000	0.000	0.000	0.059	0.007	0.000
18.Aug.17	0.000	0.071	0.000	0.000	0.000	0.007	0.040	0.001	0.000
19.Aug.17	0.011	0.000	0.000	0.000	0.000	0.000	0.130	0.010	0.000
20.Aug.17	0.001	0.000	0.000	0.000	0.000	0.000	0.003	0.000	0.000
21.Aug.17	0.000	0.071	0.016	0.000	0.000	0.008	0.016	0.000	0.000
22.Aug.17	0.000	0.000	0.000	0.000	0.000	0.000	0.064	0.005	0.000
23.Aug.17	0.000	0.000	0.000	0.000	0.000	0.008	0.029	0.002	0.000
24.Aug.17	0.000	0.028	0.042	0.000	0.000	0.000	0.004	0.001	0.000
25.Aug.17	0.000	0.021	0.000	0.000	0.000	0.000	0.071	0.002	0.000
26.Aug.17	0.000	0.000	0.000	0.000	0.000	0.012	0.033	0.000	0.000
27.Aug.17	0.002	0.000	0.001	0.000	0.000	0.000	0.005	0.001	0.000
28.Aug.17	0.000	0.000	0.005	0.000	0.000	0.000	0.010	0.000	0.000
29.Aug.17	0.000	0.003	0.004	0.000	0.000	0.000	0.027	0.000	0.000
30.Aug.17	0.003	0.000	0.001	0.000	0.000	0.004	0.002	0.000	0.000
31.Aug.17	0.000	0.018	0.000	0.000	0.000	0.006	0.035	0.009	0.000
<b>TOTAL</b>	<b>0.233</b>	<b>0.543</b>	<b>0.109</b>	<b>0.019</b>	<b>0.000</b>	<b>0.151</b>	<b>1.258</b>	<b>0.086</b>	<b>0.000</b>

ALL FIGURES IN MUs

DATE	OTHER AGENCIES LIKE GENCO, BBMB, BTPS ETC.				THEFT PRONE SHEDDING			TOTAL SHEDDING DUE TO T&D CONSTS. & THEFT PRONE	GRAND TOTAL
	BSES		NDPL	NDMC	BSES		NDPL		
	BYPL	BRPL			BYPL	BRPL			
1	35	36	37	38	39	40	41	42= 26 to 41	43 = 25 + 42
01.Aug.17	0.000	0.000	0.000	0.000	0.000	0.000	0.000	<b>0.034</b>	<b>0.034</b>
02.Aug.17	0.000	0.000	0.000	0.000	0.000	0.000	0.000	<b>0.044</b>	<b>0.044</b>
03.Aug.17	0.000	0.000	0.000	0.000	0.000	0.000	0.000	<b>0.024</b>	<b>0.024</b>
04.Aug.17	0.000	0.000	0.000	0.000	0.000	0.000	0.000	<b>0.205</b>	<b>0.205</b>
05.Aug.17	0.000	0.000	0.000	0.000	0.000	0.000	0.000	<b>0.047</b>	<b>0.047</b>
06.Aug.17	0.000	0.000	0.000	0.000	0.000	0.000	0.000	<b>0.023</b>	<b>0.023</b>
07.Aug.17	0.000	0.000	0.000	0.000	0.000	0.000	0.000	<b>0.140</b>	<b>0.140</b>
08.Aug.17	0.000	0.000	0.000	0.000	0.000	0.000	0.000	<b>0.049</b>	<b>0.049</b>
09.Aug.17	0.000	0.000	0.000	0.000	0.000	0.000	0.000	<b>0.062</b>	<b>0.062</b>
10.Aug.17	0.000	0.000	0.000	0.000	0.000	0.000	0.000	<b>0.036</b>	<b>0.036</b>
11.Aug.17	0.000	0.000	0.000	0.000	0.000	0.000	0.000	<b>0.397</b>	<b>0.397</b>
12.Aug.17	0.000	0.000	0.000	0.000	0.000	0.000	0.000	<b>0.033</b>	<b>0.033</b>
13.Aug.17	0.000	0.000	0.000	0.000	0.000	0.000	0.000	<b>0.033</b>	<b>0.033</b>
14.Aug.17	0.000	0.000	0.000	0.000	0.000	0.000	0.000	<b>0.009</b>	<b>0.009</b>
15.Aug.17	0.000	0.000	0.000	0.000	0.000	0.000	0.000	<b>0.058</b>	<b>0.058</b>
16.Aug.17	0.000	0.000	0.000	0.000	0.000	0.000	0.000	<b>0.267</b>	<b>0.267</b>
17.Aug.17	0.000	0.000	0.000	0.000	0.000	0.000	0.000	<b>0.095</b>	<b>0.095</b>
18.Aug.17	0.000	0.000	0.000	0.000	0.000	0.000	0.000	<b>0.119</b>	<b>0.119</b>
19.Aug.17	0.000	0.000	0.000	0.000	0.000	0.000	0.000	<b>0.151</b>	<b>0.151</b>
20.Aug.17	0.000	0.000	0.000	0.000	0.000	0.000	0.000	<b>0.004</b>	<b>0.004</b>
21.Aug.17	0.000	0.000	0.000	0.000	0.000	0.000	0.000	<b>0.111</b>	<b>0.111</b>
22.Aug.17	0.000	0.000	0.000	0.000	0.000	0.000	0.000	<b>0.069</b>	<b>0.072</b>
23.Aug.17	0.000	0.000	0.000	0.000	0.000	0.000	0.000	<b>0.039</b>	<b>0.039</b>
24.Aug.17	0.000	0.000	0.000	0.000	0.000	0.000	0.000	<b>0.075</b>	<b>0.075</b>
25.Aug.17	0.000	0.000	0.000	0.000	0.000	0.000	0.000	<b>0.094</b>	<b>0.094</b>
26.Aug.17	0.000	0.000	0.000	0.000	0.000	0.000	0.000	<b>0.045</b>	<b>0.045</b>
27.Aug.17	0.000	0.000	0.000	0.000	0.000	0.000	0.000	<b>0.009</b>	<b>0.009</b>
28.Aug.17	0.000	0.000	0.000	0.000	0.000	0.000	0.000	<b>0.015</b>	<b>0.015</b>
29.Aug.17	0.000	0.000	0.000	0.000	0.000	0.000	0.000	<b>0.034</b>	<b>0.034</b>
30.Aug.17	0.000	0.000	0.000	0.000	0.000	0.000	0.000	<b>0.010</b>	<b>0.010</b>
31.Aug.17	0.000	0.000	0.000	0.000	0.000	0.000	0.000	<b>0.068</b>	<b>0.068</b>
<b>TOTAL</b>	<b>0.000</b>	<b>0.000</b>	<b>0.000</b>	<b>0.000</b>	<b>0.000</b>	<b>0.000</b>	<b>0.000</b>	<b>2.399</b>	<b>2.402</b>

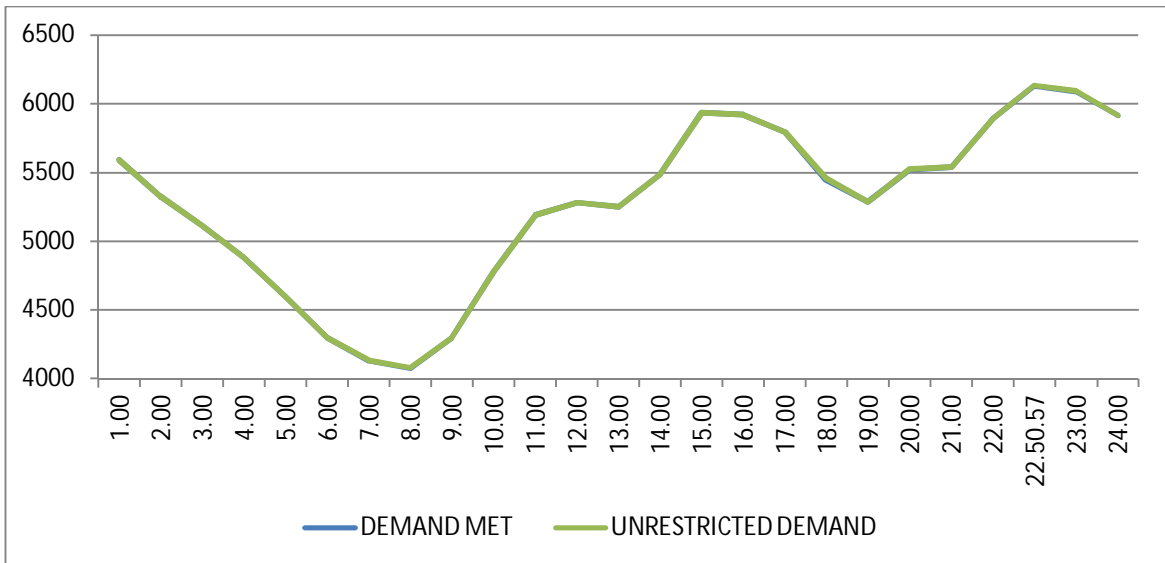


DATE	(NET CONS.)	MAXI. DEMAND MET DURING THE DAY	TIME OF OCCURRENCE OF MAX DEMAND	SHEDDING AT THIS TIME	UN-RESTRICTED DEMAND	MAXIMUM UN-RESTRICTED DEMAND DURING THE DAY	TIME OF MAX. UN-REST. DEMAND	DEMAND AT THAT TIME	SHEDDING AT THAT TIME
	In Mus.	IN MW	IN HRS.	IN MW	IN MW	IN MW	HRS.	IN MW	IN MW
<b>1</b>	<b>32</b>	<b>33</b>	<b>34</b>	<b>35</b>	<b>36=33+35</b>	<b>37=39+40</b>	<b>38</b>	<b>39</b>	<b>40</b>
01.Aug.17	107.489	4988	15:30:24	0	4988	4988	15:30:24	4988	0
02.Aug.17	106.543	5014	22:56:37	0	5014	5014	22:56:37	5014	0
03.Aug.17	109.893	5392	15:25:45	0	5392	5392	15:25:45	5392	0
04.Aug.17	114.082	5415	22:56:00	2	5417	5417	22:56:00	5415	2
05.Aug.17	109.923	5340	22:59:57	0	5340	5340	22:59:57	5340	0
06.Aug.17	110.112	5436	22:57:51	0	5436	5436	22:57:51	5436	0
07.Aug.17	109.935	5297	00:00:55	0	5297	5297	00:00:55	5297	0
08.Aug.17	111.356	5481	22:47:39	0	5481	5481	22:47:39	5481	0
09.Aug.17	113.535	5282	22:56:47	0	5282	5282	22:56:47	5282	0
10.Aug.17	115.903	5593	22:32:34	0	5593	5593	22:32:34	5593	0
11.Aug.17	116.861	5627	15:30	34	5661	5661	15:30	5627	34
12.Aug.17	110.240	5244	00:02:02	0	5244	5244	00:02:02	5244	0
13.Aug.17	106.063	5261	22:57:23	0	5261	5261	22:57:23	5261	0
14.Aug.17	112.283	5421	23:18:29	0	5421	5421	23:18:29	5421	0
15.Aug.17	98.321	5292	00:00:16	0	5292	5292	00:00:16	5292	0
16.Aug.17	116.752	5859	22:43:39	0	5859	5859	22:43:39	5859	0
17.Aug.17	122.919	6053	22:46:39	16	6069	6069	22:46:39	6053	16
18.Aug.17	126.820	6129	22:50:57	4	6133	6133	22:50:57	6129	4
19.Aug.17	116.324	5928	00:00:11	0	5928	5928	00:00:11	5928	0
20.Aug.17	107.760	5561	23:01	0	5561	5561	23:01	5561	0
21.Aug.17	119.187	5829	22:55:08	0	5829	5829	22:55:08	5829	0
22.Aug.17	120.305	5601	23:03:03	0	5601	5601	23:03:03	5601	0
23.Aug.17	114.224	5392	00:00:03	0	5392	5392	00:00:03	5392	0
24.Aug.17	112.764	5464	22:55:59	0	5464	5464	22:55:59	5464	0
25.Aug.17	116.818	5425	15:07:19	0	5425	5425	15:07:19	5425	0
26.Aug.17	105.463	4956	15:26:25	0	4956	4956	15:26:25	4956	0
27.Aug.17	102.215	5105	23:00	2	5107	5107	23:00	5105	2
28.Aug.17	107.517	5009	00:00:00	0	5009	5009	00:00:00	5009	0
29.Aug.17	110.365	5291	23:13:39	0	5291	5291	23:13:39	5291	0
30.Aug.17	112.838	5287	15:17:55	0	5287	5287	15:17:55	5287	0
31.Aug.17	106.353	5017	12:21:21	5	5022	5022	12:21:21	5017	5
<b>TOTAL</b>	<b>3471.663</b>	<b>6129</b> 18.08.17	<b>22:50:57</b>	<b>4</b>	<b>6133</b> 18.08.17	<b>6133</b>	<b>22:50:57</b>	<b>6129</b>	<b>4</b>

10 **LOAD PATTERN OF DELHI ON THE DAY OF PEAK DEMAND MET DURING AUGUST 2017 ON 18.08.2017- 6129MW AT 22.50.57HRS.**

All figures in MW

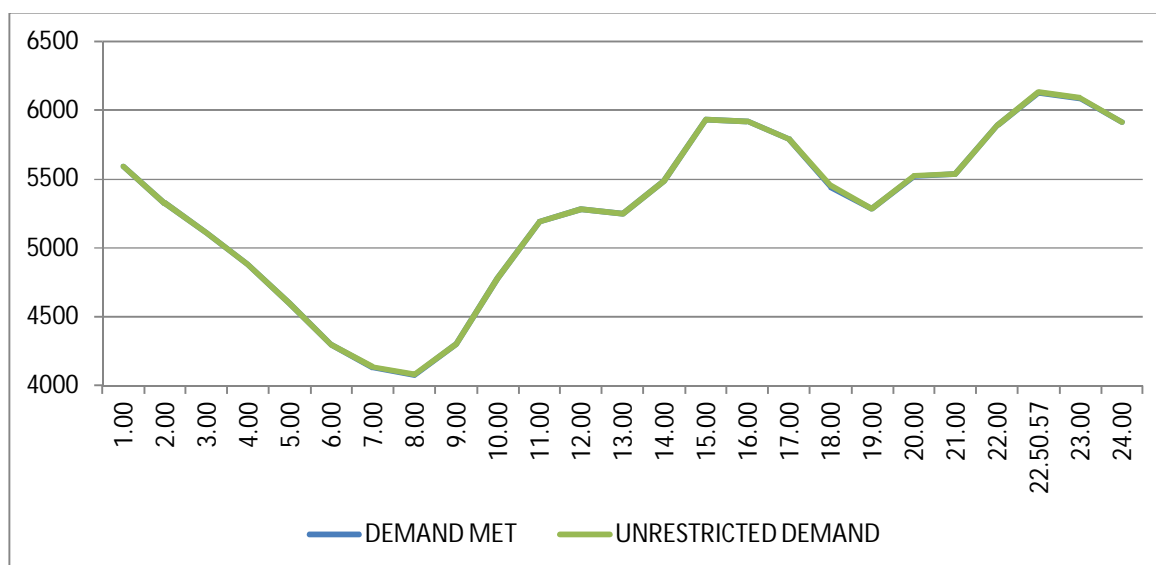
Hrs.	Demand	Load Shedding	Un-Restricted Demand
1.00	5589	3	5592
2.00	5326	0	5326
3.00	5109	0	5109
4.00	4881	0	4881
5.00	4596	0	4596
6.00	4297	0	4297
7.00	4131	3	4134
8.00	4076	4	4080
9.00	4297	3	4300
10.00	4778	0	4778
11.00	5189	0	5189
12.00	5283	0	5283
13.00	5247	0	5247
14.00	5483	0	5483
15.00	5932	0	5932
16.00	5920	0	5920
17.00	5792	0	5792
18.00	5443	15	5458
19.00	5287	0	5287
20.00	5519	6	5525
21.00	5539	0	5539
22.00	5891	0	5891
22.50.57	6129	4	6133
23.00	6087	4	6091
24.00	5916	0	5916
<b>Total (IN MUS)</b>	<b>126.82</b>	<b>0.119</b>	<b>126.939</b>



**11 LOAD PATTERN OF DELHI ON THE DAY OF MAXIMUM UN-RESTRICTED DEMAND DURING AUGUST 2017 ON 18.08.2017-6133MW AT 20.50.57HRS.**

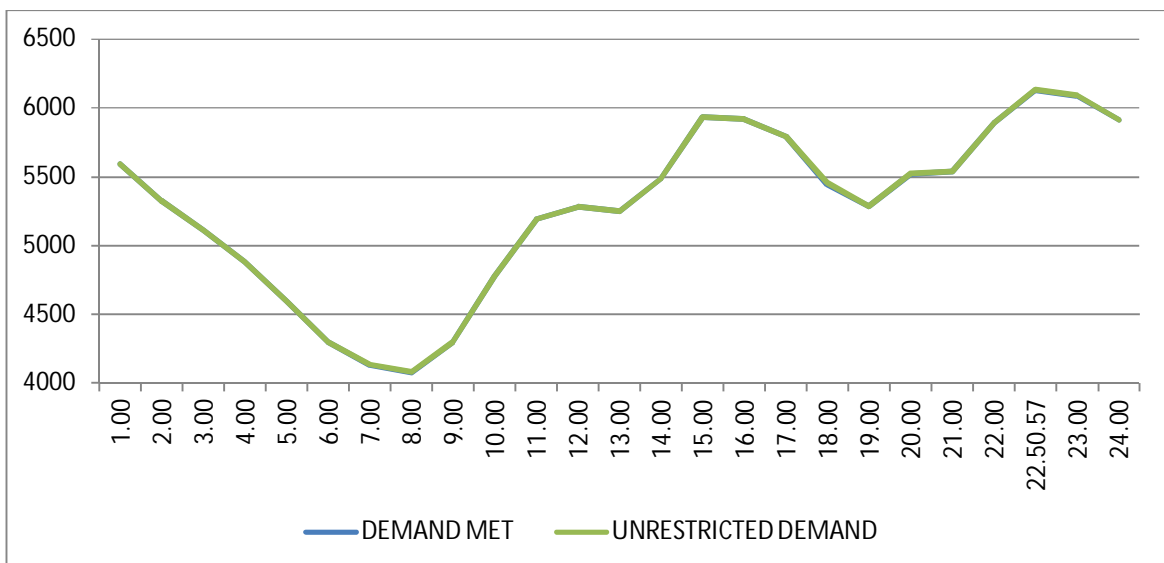
All figures in MW

Hrs.	Demand	Load Shedding	Un-Restricted Demand
1.00	5589	3	5592
2.00	5326	0	5326
3.00	5109	0	5109
4.00	4881	0	4881
5.00	4596	0	4596
6.00	4297	0	4297
7.00	4131	3	4134
8.00	4076	4	4080
9.00	4297	3	4300
10.00	4778	0	4778
11.00	5189	0	5189
12.00	5283	0	5283
13.00	5247	0	5247
14.00	5483	0	5483
15.00	5932	0	5932
16.00	5920	0	5920
17.00	5792	0	5792
18.00	5443	15	5458
19.00	5287	0	5287
20.00	5519	6	5525
21.00	5539	0	5539
22.00	5891	0	5891
22.50.57	6129	4	6133
23.00	6087	4	6091
24.00	5916	0	5916
<b>Total (IN MUS)</b>	<b>126.82</b>	<b>0.119</b>	<b>126.939</b>



**12 LOAD PATTERN OF DELHI ON THE DAY OF MAXIMUM ENERGY CONSUMED DURING AUGUST 2017 – 18.08.2017 – 126.820Mus All figures in MW**

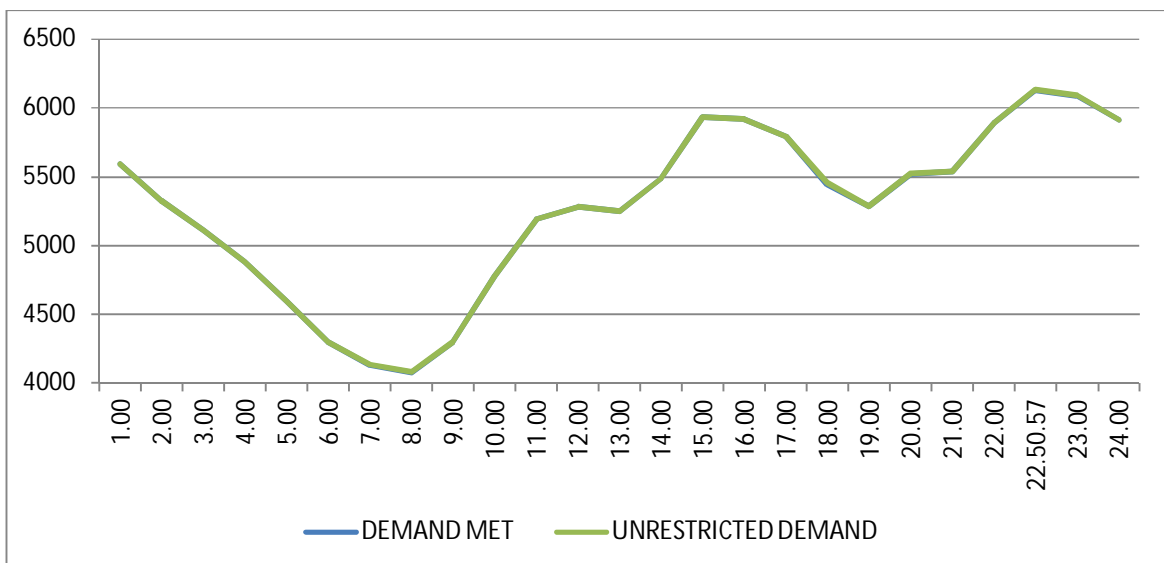
Hrs.	Demand	Load Shedding	Un-Restricted Demand
1.00	5589	3	5592
2.00	5326	0	5326
3.00	5109	0	5109
4.00	4881	0	4881
5.00	4596	0	4596
6.00	4297	0	4297
7.00	4131	3	4134
8.00	4076	4	4080
9.00	4297	3	4300
10.00	4778	0	4778
11.00	5189	0	5189
12.00	5283	0	5283
13.00	5247	0	5247
14.00	5483	0	5483
15.00	5932	0	5932
16.00	5920	0	5920
17.00	5792	0	5792
18.00	5443	15	5458
19.00	5287	0	5287
20.00	5519	6	5525
21.00	5539	0	5539
22.00	5891	0	5891
22.50.57	6129	4	6133
23.00	6087	4	6091
24.00	5916	0	5916
<b>Total (IN MUS)</b>	<b>126.82</b>	<b>0.119</b>	<b>126.939</b>



**13 LOAD PATTERN OF DELHI ON THE DAY OF MAXIMUM UNRESTRICTED ENERGY DEMAND DURING AUGUST 2017 – 18.08.2017 – 126.939Mus**

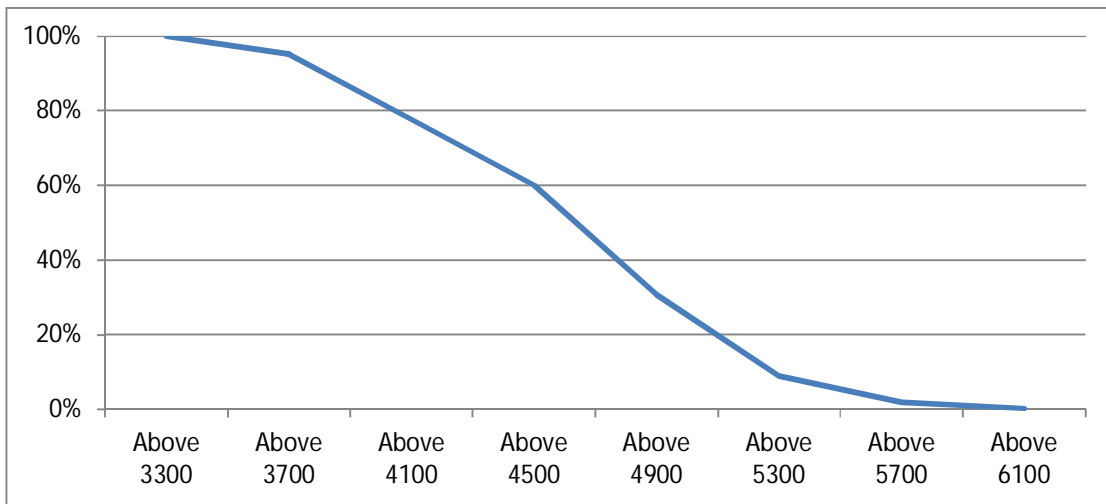
All figures in MW

Hrs.	Demand	Load Shedding	Un-Restricted Demand
1.00	5589	3	5592
2.00	5326	0	5326
3.00	5109	0	5109
4.00	4881	0	4881
5.00	4596	0	4596
6.00	4297	0	4297
7.00	4131	3	4134
8.00	4076	4	4080
9.00	4297	3	4300
10.00	4778	0	4778
11.00	5189	0	5189
12.00	5283	0	5283
13.00	5247	0	5247
14.00	5483	0	5483
15.00	5932	0	5932
16.00	5920	0	5920
17.00	5792	0	5792
18.00	5443	15	5458
19.00	5287	0	5287
20.00	5519	6	5525
21.00	5539	0	5539
22.00	5891	0	5891
22.50.57	6129	4	6133
23.00	6087	4	6091
24.00	5916	0	5916
<b>Total (IN MUS)</b>	<b>126.82</b>	<b>0.119</b>	<b>126.939</b>



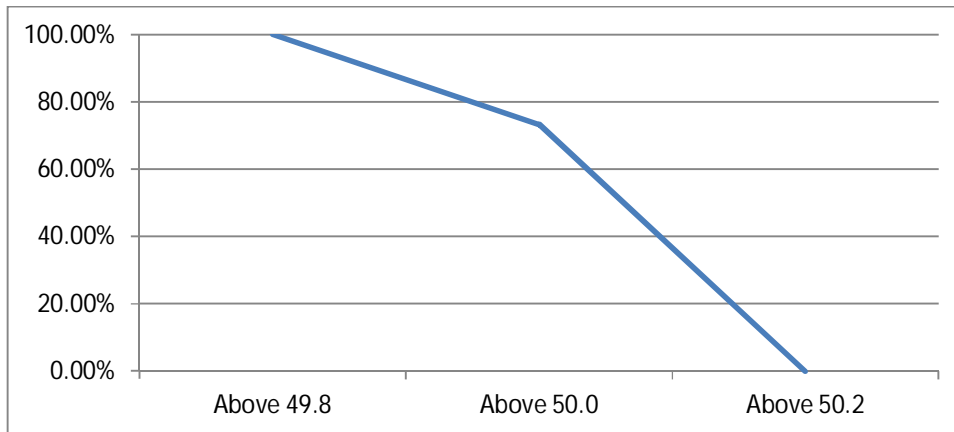
14 LOAD DURATION CURVE FOR AUGUST 2017

Load in MW	Percentage of Time
Above 3300	100%
Above 3700	95.13%
Above 4100	77.72%
Above 4500	60.11%
Above 4900	30.85%
Above 5300	8.97%
Above 5700	1.85%
Above 6100	0.24%



## FREQUENCY ANALYSIS FOR THE MONTH OF AUGUST 2017

<b>Frequency Range in Hz.</b>	<b>Percentage of time</b>
Above 49.8	100.00%
Above 50.0	86.79%
Above 50.2	0.00%



**16 VOLTAGE PROFILE OF 220 KV SUB-STATIONS IN DELHI DURING AUGUST 2017**

**All figures in kV**

Date	NARELA		GAZIPUR	
	Max	Min	Max	Min
01.Aug.17	228.27	216.53	227.50	221.44
02.Aug.17	227.50	216.28	234.46	22.85
03.Aug.17	228.14	215.12	233.82	219.50
04.Aug.17	226.34	214.47	234.33	217.82
05.Aug.17	227.24	213.18	234.07	219.63
06.Aug.17	225.30	213.83	232.78	--
07.Aug.17	226.98	213.31	233.04	222.21
08.Aug.17	227.88	214.47	234.33	217.05
09.Aug.17	226.21	216.28	233.69	220.15
10.Aug.17	227.50	214.60	234.59	218.47
11.Aug.17	226.21	214.47	233.69	215.12
12.Aug.17	226.98	213.83	232.78	220.27
13.Aug.17	226.98	214.73	234.07	221.44
14.Aug.17	226.69	215.12	233.17	219.11
15.Aug.17	225.95	215.37	233.43	220.40
16.Aug.17	225.95	212.41	230.72	214.60
17.Aug.17	226.34	212.41	229.30	214.73
18.Aug.17	225.56	--	230.72	214.73
19.Aug.17	228.14	217.70	233.43	222.85
20.Aug.17	230.72	215.12	235.75	222.08
21.Aug.17	225.56	213.70	231.49	219.11
22.Aug.17	226.08	215.37	230.21	217.57
23.Aug.17	228.14	218.47	231.88	221.69
24.Aug.17	228.92	216.28	234.46	220.92
25.Aug.17	228.66	217.95	232.78	220.53
26.Aug.17	227.88	217.82	233.17	221.44
27.Aug.17	228.66	216.02	234.46	221.05
28.Aug.17	226.98	217.31	231.88	218.21
29.Aug.17	228.53	218.47	234.46	221.44
30.Aug.17	227.24	218.34	231.75	219.24
31.Aug.17	228.66	220.15	234.98	222.98



**17 VOLTAGE PROFILE OF 400 KV SUB-STATIONS IN DELHI DURING AUGUST 2017**

**All figures in kV**

Date	400kV Bamnauli Grid Sub-Station				
	Max KV	Max Time	Min KV	Min Time	Average KV
01.Aug.17	411.99	06.02	390.89	19.43	401.09
02.Aug.17	411.99	08.02	388.54	19.37	401.57
03.Aug.17	414.57	07.33	387.37	14.51	400.12
04.Aug.17	410.35	06.01	387.37	14.38	398.13
05.Aug.17	411.29	06.02	385.26	23.19	397.88
06.Aug.17	409.88	07.46	386.90	00.00	398.62
07.Aug.17	413.40	16.05	388.54	00.12	401.54
08.Aug.17	412.46	06.02	386.67	14.55	398.61
09.Aug.17	408.01	07.02	385.26	14.53	397.12
10.Aug.17	413.40	07.06	386.20	22.15	398.91
11.Aug.17	410.12	06.02	382.92	14.38	396.52
12.Aug.17	410.12	06.00	384.09	22.46	397.12
13.Aug.17	411.52	08.01	388.08	00.05	399.55
14.Aug.17	409.18	06.25	385.50	22.10	396.63
15.Aug.17	408.48	18.02	387.84	22.27	400.09
16.Aug.17	406.60	04.45	379.40	14.35	393.32
17.Aug.17	403.79	05.05	378.46	14.52	391.77
18.Aug.17	403.79	06.31	376.12	14.56	391.58
19.Aug.17	411.99	07.05	385.03	00.22	398.77
20.Aug.17	412.46	06.01	386.67	22.10	401.04
21.Aug.17	406.37	07.58	383.39	14.26	394.58
22.Aug.17	405.66	07.03	385.50	12.38	394.57
23.Aug.17	407.77	06.04	388.78	00.00	399.64
24.Aug.17	412.46	07.01	390.19	23.09	400.33
25.Aug.17	411.29	07.03	392.06	20.45	400.99
26.Aug.17	413.40	07.59	393.70	19.18	402.87
27.Aug.17	414.81	06.02	391.59	22.10	403.97
28.Aug.17	411.99	04.01	391.59	22.15	401.16
29.Aug.17	412.70	07.01	393.47	22.30	401.57
30.Aug.17	410.82	07.00	390.42	14.42	401.70
31.Aug.17	413.40	07.01	397.92	11.26	405.93

All figures in kV

Date	400kV Bawana Grid Sub-Station				
	Max KV	Max Time	Min KV	Min Time	Average KV
01.Aug.17	413.17	07.03	396.28	19.40	403.84
02.Aug.17	412.33	08.21	393.70	19.39	404.47
03.Aug.17	412.23	07.36	392.76	14.55	402.13
04.Aug.17	408.94	06.02	392.06	14.42	399.78
05.Aug.17	409.18	06.03	389.72	23.21	398.94
06.Aug.17	406.83	06.03	390.42	00.00	398.65
07.Aug.17	411.06	16.16	390.42	00.13	402.16
08.Aug.17	413.40	06.02	391.36	14.55	400.98
09.Aug.17	407.54	08.01	393.23	22.14	399.86
10.Aug.17	408.94	07.01	389.70	19.28	399.60
11.Aug.17	408.01	06.03	390.19	14.38	398.88
12.Aug.17	407.77	06.02	389.25	22.45	398.84
13.Aug.17	408.01	08.02	389.95	19.36	399.49
14.Aug.17	406.60	06.27	390.42	14.18	398.20
15.Aug.17	406.37	16.03	391.59	23.19	400.46
16.Aug.17	406.13	06.02	387.37	14.35	396.96
17.Aug.17	406.83	05.18	387.37	14.51	396.53
18.Aug.17	403.79	06.34	385.73	14.57	395.34
19.Aug.17	409.55	08.05	393.23	00.18	402.53
20.Aug.17	413.87	06.03	393.94	22.16	404.76
21.Aug.17	408.71	06.59	397.47	14.26	400.78
22.Aug.17	406.60	07.02	393.94	22.16	399.50
23.Aug.17	409.88	07.00	395.81	19.17	402.40
24.Aug.17	411.52	06.07	395.11	23.06	402.97
25.Aug.17	411.06	07.03	397.92	00.07	403.13
26.Aug.17	410.82	06.05	396.28	19.16	403.79
27.Aug.17	412.33	06.02	395.11	19.28	403.62
28.Aug.17	409.88	04.00	396.75	19.22	402.54
29.Aug.17	411.29	07.33	397.92	00.10	404.06
30.Aug.17	410.82	07.00	397.92	14.43	404.18
31.Aug.17	413.40	06.53	399.80	11.35	407.03

## 18 DETAILS OF LUMPED CAPACITORS AT NEAREST 220 KV SUBSTATION

Sl. No	SUB-STATION	INSTALLED CAPACITY			
		66KV	33kV	11kV	TOTAL
1	IP YARD		30.00		30.00
1	Kamla Market			16.35	16.35
2	Minto Road				0.00
3	GB Pant Hosp			10.48	10.48
4	Delhi Gate			16.30	16.30
5	Tilakmarg			5.04	5.04
7	Cannaught Place			10.08	10.08
8	Kilokri		10.08	10.48	20.56
9	NDSE-II				0.00
11	Nizamuddin				0.00
12	Exhibition-I				0.00
13	Exhibition-II				0.00
14	Defence Colony				0.00
15	IG Stadium		10.08	5.45	15.53
16	Lajpat Nagar				0.00
17	IP Estate			10.90	10.90
		0.00	50.16	85.08	135.24
2	Electric Lane				
1	Electric Lane			5.04	5.04
2	Scindia House			10.44	10.44
3	Mandi House			10.80	10.80
4	Raisina Road			10.08	10.08
5	Raja Bazar			10.08	10.08
		0.00	0.00	46.44	46.44
3	RPH Station		20.00		20.00
1	Lahori Gate			10.49	10.49
2	Jama Masjid			10.48	10.48
4	Kamla Market				0.00
5	Minto Road			10.90	10.90
6	GB Pant Hosp				0.00
7	IG Stadium				0.00
		0.00	20.00	31.87	51.87
4	Parkstreet S/stn	20.00	20.00		40.00
1	Shastri Park		10.90	5.45	16.35
2	Faiz Road			18.05	18.05
3	Motia Khan			16.30	16.30
4	Prasad Nagar			16.25	16.25
5	Anand Parbat			10.80	10.80
6	Shankar Road			10.44	10.44
7	Rama Road			0.00	0.00
8	Baird Road			10.08	10.08
9	Hanuman Road			10.08	10.08
10	Pusa			5.44	5.44
11	Ridge Valley			0.00	0.00
12	B. D. Marg			5.40	5.40
13	Nirman Bhawan			5.04	5.04
		20.00	30.90	113.33	164.23
5	Naraina S/stn		20.00	5.04	25.04
1	DMS			10.85	10.85
2	Mayapuri		10.87	10.40	21.27
3	Inderpuri		13.26	5.04	18.30
4	Rewari line				0.00
5	Khyber Lane		10.05		10.05
6	Kirbi Place		10.05		10.05
7	Payal			10.08	10.08
8	A-21 Naraina			4.80	4.80
8	Saraswati Garden			10.08	10.08
		0.00	64.23	56.29	120.52

Sl. No	SUB-STATION	INSTALLED CAPACITY			
		66KV	33kv	11kv	TOTAL
6	Mehrauli S/stn	80.00		5.04	85.04
1	Adchini			14.61	14.61
2	Andheria Bagh			10.85	10.85
3	IIT			10.90	10.90
4	JNU		10.03	10.03	20.06
5	Bijwasan			15.47	15.47
6	DC Saket		10.08	9.98	20.06
7	Malviya Nagar				0.00
8	C Dot			10.48	10.48
9	Vasant kunj B-Blk	21.79		10.90	32.69
10	Vasant kunj C-Blk	20.16		10.48	30.64
11	Palam				0.00
12	IGNOU			5.04	5.04
13	R. K. Puram-I			10.07	10.07
14	Vasant Vihar			19.25	19.25
15	Pusp Vihar			10.44	10.44
16	Bhikaji Cama Place		10.08	10.07	20.15
		121.95	30.19	163.61	315.75
7	Vasantkunj S/stn	40.00		5.04	45.04
1	R. K. Puram-II			10.80	10.80
2	Vasant kunj C-Blk				0.00
3	Vasant kunj D-Blk			9.63	9.63
4	Ridge Valley				0.00
		40.00	0.00	25.47	65.47
8	Okhla S/stn	60.00	10.00	5.04	75.04
1	Balaji			10.80	10.80
2	East of Kailash			15.89	15.89
3	Alaknanda			16.30	16.30
4	Malviya Nagar	21.79	20.16	10.85	52.80
5	Masjid Moth			16.30	16.30
6	Nehru Place			21.34	21.34
7	Okhla Ph-I	21.79		16.30	38.09
8	Okhla Ph-II		20.93	15.47	36.40
9	Shivalik			10.80	10.80
10	Batra			15.90	15.90
11	VSNL			10.90	10.90
12	Siri Fort			10.49	10.49
13	Tuglakabad			10.85	10.85
		103.58	51.09	187.23	341.90
9	Lodhi Road S/stn			20.00	20.00
1	Defence Colony			14.85	14.85
2	Hudco			10.90	10.90
3	Lajpat Nagar			10.90	10.90
4	Nizamuddin			10.44	10.44
5	Vidyut Bhawan (Shahjahan Rd)			10.80	10.80
6	Ex. Gr. II			0.00	0.00
7	IHC			0.00	0.00
		0.00	0.00	77.89	77.89
10	Sarita Vihar S/stn	20.00		5.04	25.04
1	Sarita Vihar			10.07	10.07
2	MCIE			10.06	10.06
3	Mathura Road	20.16		11.69	31.85
4	Jamia Millia			10.89	10.89
5	Sarai Julena		10.08	16.29	26.37
6	Jasola			5.44	5.44
		40.16	10.08	69.48	119.72

Sl. No	SUB-STATION	INSTALLED CAPACITY			
		66KV	33kV	11kV	TOTAL
11	Wazirabad				
1	Bhagirathi		14.40	18.10	32.50
2	Ghonda	21.79	22.56	15.94	60.29
3	Seelam Pur		10.08	21.39	31.47
4	Dwarkapuri			15.46	15.46
5	Nandnagri	20.16		16.35	36.51
6	Yamuna Vihar			14.40	14.40
7	East of Loni Road			18.00	18.00
8	Shastri Park			10.90	10.90
9	Karawal Nagar			5.40	5.40
10	Sonia Vihar			14.70	14.70
		41.95	47.04	150.64	239.63
12	Geeta Colony				
1	Geeta Colony			10.49	10.49
2	Kanti Nagar			18.10	18.10
3	Kailash Nagar			15.48	15.48
4	Seelam Pur				0.00
5	Shakar Pur			10.80	10.80
		0.00	0.00	54.87	54.87
13	Gazipur S/stn	40.00		5.04	45.04
1	Dallupura	28.80		10.90	39.70
2	Vivek Vihar			9.57	9.57
3	GT Road			10.85	10.85
4	Kondli	20.16		10.85	31.01
5	MVR-I			10.90	10.90
6	MVR-II	20.16		10.44	30.60
7	PPG Ind. Area			10.06	10.06
		109.12	0.00	78.61	187.73
14	Patparganj S/stn	40.00	20.00	5.04	65.04
1	GH-I	19.89		10.45	30.34
2	GH-II	20.09		10.90	30.99
3	CBD		10.03	15.48	25.51
4	Guru Angad Nagar			15.49	15.49
5	Karkadooma		10.80	10.44	21.24
6	Preet Vihar			10.07	10.07
7	CBD-II			10.80	10.80
8	Shakarpur				0.00
9	Jhilmil			10.80	10.80
10	Dilshad Garden	20.16		16.35	36.51
11	Khichripur	21.79		15.89	37.68
12	Mother Dairy				0.00
13	Scope Building				0.00
14	Vivek Vihar				0.00
15	Akhardham			14.60	14.60
		121.93	40.83	146.31	309.07
15	Najafgarh S/stn	60.00		5.04	65.04
1	A4 Paschim Vihar			10.80	10.80
2	Nangloi	21.73		15.84	37.57
3	Nangloi W/W	20.89		10.85	31.74
4	Pankha Road			15.88	15.88
5	Jaffarpur			15.43	15.43
7	Inst. Area Janakpuri (Sagarpur)			17.60	17.60
8	Paschimpuri		10.05	15.47	25.52
9	Paschim Vihar	41.83		15.43	57.26
10	Mukherjee Park			20.83	20.83
11	Udyog Nagar			10.43	10.43
12	Choukhandi			10.07	10.07
13	DJB Najafgarh			21.60	21.60
		144.45	10.05	185.27	339.77

Sl. No	SUB-STATION	INSTALLED CAPACITY			
		66KV	33kV	11kV	TOTAL
16	Pappankalan-I S/stn	20.00		5.04	25.04
1	Bindapur Grid G-3 PPK	21.73		15.85	37.58
2	Bodella-I	20.10		16.24	36.34
3	Bodella-II	21.73		17.64	39.37
4	DC Janakpuri			10.03	10.03
5	G-2 PPK (Nasirpur)			10.80	10.80
6	G-5 PPK (Matiala)			15.51	15.51
7	G-6 PPK			5.40	5.40
8	G-15 PPK			10.80	10.80
9	Harinagar	21.18		16.25	37.43
10	Rewari line			5.44	5.44
		104.74	0.00	129.00	233.74
17	BBMB Rohtak Road				
1	S.B. Mill			10.07	10.07
2	Rama Road			10.88	10.88
3	Ram Pura			10.48	10.48
4	Rohtak Road			10.08	10.08
5	Vishal			10.40	10.40
6	Madipur			10.43	10.43
7	Sudershan Park			10.08	10.08
8	Kirti Nagar			5.44	5.44
		0.00	0.00	77.86	77.86
18	Shalimarbagh S/stn		40.00	6.00	46.00
1	S.G.T. Nagar			5.44	5.44
2	Ashok Vihar			0.00	0.00
3	Haiderpur			11.39	11.39
4	SMB FC			12.64	12.64
5	Rani Bagh			5.44	5.44
6	SMB KHOSLA			5.44	5.44
		0.00	40.00	46.35	86.35
19	Subzimandi S/stn			6.00	6.00
1	Shakti Nagar			5.04	5.04
2	Gulabibagh			10.88	10.88
3	Shahzadabagh			15.79	15.79
4	DU			5.44	5.44
5	Tripolia			10.88	10.88
6	B. G. Road			5.40	5.40
		0.00	0.00	59.43	59.43
20	Narela S/stn	40.00		5.04	45.04
1	A-7 Narela			10.88	10.88
2	Azad Pur			5.44	5.44
3	Badli	20.00		5.95	25.95
4	DSIDC Narela-1			5.95	5.95
5	GTK			5.94	5.94
6	Jahangirpuri	20.00	10.00	0.00	30.00
7	Bhalswa			12.64	12.64
8	Pitampura-I	20.00		5.04	25.04
9	RG-1			5.44	5.44
		100.00	10.00	62.32	172.32

Sl. No	SUB-STATION	INSTALLED CAPACITY			
		66KV	33kV	11kV	TOTAL
21	Gopalpur S/stn		30.00	5.04	35.04
1	Hudson Lane			5.95	5.95
2	Wazirabad			7.20	7.20
3	Indra Vihar			5.95	5.95
4	DIFR			5.44	5.44
5	GTK Road			5.44	5.44
6	Jahangirpuri		10.00	5.95	15.95
7	Civil lines			7.20	7.20
8	Pitam Pura-3			5.44	5.44
9	SGT Nagar			5.95	5.95
10	Tiggipur			10.88	10.88
11	Model Town			14.40	14.40
12	Azad Pur			5.44	5.44
		0.00	40.00	90.28	130.28
22	Rohini S/stn	40.00		6.00	46.00
1	Rohini Sec-22			18.08	18.08
2	Rohini Sec-24			5.44	5.44
3	Rohini-3			5.95	5.95
4	Rohini-4			11.39	11.39
5	Rohini-5			11.39	11.39
6	Rohini-6			0.00	0.00
7	Mangolpuri-2	20.00		7.20	27.20
8	Pitam Pura-1			5.44	5.44
9	Pitam Pura-2			10.48	10.48
10	Rohini DC-1			14.40	14.40
11	AIR Kham pur			11.90	11.90
		60.00	0.00	107.67	167.67
23	Kanjhawala S/stn	20.00		5.04	25.04
1	Bawana Clear Water			14.30	14.30
2	Pooth Khoord	20.00		5.44	25.44
4	Rohini -2			13.15	13.15
		40.00	0.00	37.93	77.93
24	BAWANA S/stn				
1	Bawana S/stn No. 6			10.88	10.88
2	Bawana S/stn No. 7			7.20	7.20
		0.00	0.00	18.08	18.08
25	Kashmeregate S/stn			5.04	5.04
1	Civil lines			7.20	7.20
2	Town Hall			8.64	8.64
3	Fountain			5.45	5.45
		0.00	0.00	26.33	26.33
26	Pappankalan-II				
1	DMRC				0.00
2	HASTAL			21.60	21.60
3	GGSH			10.80	10.80
		0.00	0.00	32.40	32.40
27	Trauma Center (AIIMS)				
1	AIIMS		13.26	5.04	18.30
2	Trauma Center			10.08	10.08
3	Netaji Nagar			15.12	15.12
4	Sanjay Camp			10.08	10.08
5	Kidwai Nagar			10.08	10.08
6	SJ Airport			5.04	5.04
7	Race Course			10.44	10.44
		0.00	13.26	65.88	79.14

Sl. No	SUB-STATION	INSTALLED CAPACITY			
		66KV	33kV	11kV	TOTAL
28	MUNDKA				
1	Mangolpuri-I			20.35	20.35
2	Rohini Sec-23	20.00		12.64	32.64
3	66kV Mundka			21.60	21.60
		20.00	0.00	54.59	74.59
29	DSIDC BAWANA				
1	DSIDC NRL-1	20.00			20.00
2	DSIDC NRL-2			16.32	16.32
3	Bawana Clear Water			7.30	7.30
4	Bawana-1			14.40	14.40
		20.00	0.00	38.02	58.02
30	RIDGE VALLEY				
1	Keventry Diary			10.08	10.08
2	Nehru Park			5.04	5.04
3	State Guest House			5.40	5.40
4	Bapu Dham			15.48	15.48
		0.00	0.00	36.00	36.00
31	IP EXTN (PRAGATI)				
1	Vidyut Bhawan			10.08	10.08
2	Dalhousie Road			5.04	5.04
3	National Archives			10.08	10.08
4	School Lane			10.44	10.44
		0.00	0.00	35.64	35.64
32	Wazirpur				
1	Tri Nagar			10.88	10.88
2	Wazirpur-1			17.18	17.18
3	Wazirpur-2			13.20	13.20
4	Ashok vihar			17.80	17.80
5	Azad Pur			5.44	5.44
6	GTK			4.80	4.80
		0.00	0.00	69.30	69.30
33	Peeragarhi				
1	Rani Bagh			5.44	5.44
2	Rani Bagh cc			9.60	9.60
		0.00	0.00	15.04	15.04
34	Rohini-II				
1	Rohini-6			13.15	13.15
		0.00	0.00	13.15	13.15

Utility	HT	LT	Total
BYPL	901.18	102.00	<b>1003.18</b>
BRPL	1264.49	242.00	<b>1506.49</b>
TPDDL	820.34	119.00	<b>939.34</b>
NDMC	253.74	24.00	<b>277.74</b>
DTL	753.52	0.00	<b>753.52</b>
IPGCL (RPH)	20.00	0.00	<b>20.00</b>
MES	20.10	0.00	<b>20.10</b>
<b>TOTAL</b>	<b>4033.37</b>	<b>487.00</b>	<b>4520.37</b>



**20 DETAILS OF BREAK-DOWNS DURING THE MONTH OF AUGUST 2017**

SL NO	OCCURRENCE OF BREAK-DOWN		DETAILS OF THE BREAKDOWN	TIME OF RESTORATION		REMARKS
	DATE	TIME		DATE	TIME	
1	1.8.17	16:29	OKHLA 220/66kV 100MVA Tx-II	1.8.17	16:38	I/C TRIPPED WITHOUT INDICATION.
2	1.8.17	16:29	OKHLA 220/66kV 100MVA Tx-I	1.8.17	16:40	I/C TRIPPED ON 51AX.
3	2.8.17	06:50	MASJID MOTH 220/33kV 100MVA Tr-III	2.8.17	07:45	86, DIFFERENTIAL PROTECTION. I/C TRIPPED ON 86.
4	2.8.17	14:00	NARAINA 220/33kV 100MVA Tx-III	2.8.17	14:13	O/C, 86. I/C TRIPPED ON TRIP SUPERVISION.
5	2.8.17	14:20	VASANT KUNJ 220/66kV 100MVA Tx-II	2.8.17	18:35	HOT POINT ON HV SIDE R PHASE BUSHING.
6	2.8.17	15:35	220kV GEETA COLONY- PATPARGANJ CKT - II	2.8.17	18:00	AT PATPARGANJ : DIST PROT, ZONE-I, Y-B PHASE, DIST 2.7KM., 186. ATTENDING HOT POINT. AT GEETA COLONY : DIST PROT, ZONE-I, DIST 1.757KM.
7	4.8.17	05:58	OKHLA 220/66kV 100MVA Tx-I	4.8.17	06:25	I/C TRIPPED ON E/F.
8	4.8.17	13:46	220kV MUNDKA-KANJHAWALA CKT	4.8.17	16:47	AT MUNDKA : DIST PROT, ZONE-I, DIST 15.11KM.
9	5.8.17	11:26	220kV MUNDKA-KANJHAWALA CKT	5.8.17	19:15	AT MUNDKA : DIST PROT, ZONE-II, DIST 14.8KM, 86A&B. AT KHANJAWALA : NO TRIPPING.
10	5.8.17	11:52	220kV GAZIPUR- PATPARGANJ CKT	28.8.17	11:59	AT GAZIPUR : DIST PROT, ZONE-I, DIST 3.51KM.
11	5.8.17	13:06	400kV Dadri - Harsh Vihar Ckt. -II	5.8.17	13:44	AT HARSH VIHAR : DIST PROT, ZONE-I DIST 35.8KM.
12	6.8.17	09:47	220KV GAZIPUR - MAHARANIBAGH CKT. -I	6.8.17	13:08	AT MAHARANI BAGH : TRIPPED ON COMMON FAILURE AT GAZIPUR : NO TRIPPING.
13	6.8.17	09:47	220KV GAZIPUR - MAHARANIBAGH CKT. -II	6.8.17	13:25	AT MAHARANI BAGH : DIST PROT, DIST 4.5KM. AT GAZIPUR : DIST PROT, ZONE-I, LINE DIFFERENTIAL.
14	6.8.17	11:33	220kV MEHRAULI - BTPS CKT. - II	6.8.17	12:08	AT MEHRAULI : DIST PROT, ZONE-I, DIST 12.55KM. AT BTPS : DIST PROT, ZONE-I, DIST 5.3KM.
15	7.8.17	16:25	NARAINA 220/33kV 100MVA Tx-III	7.8.17	17:02	86, I/C TRIPPED ON O/C, R & B PHASE.
16	7.8.17	14:55	220kV BAMNAULI-NARAINA CKT-II	7.8.17	16:01	AT BAMNAULI : DIST. PROT, DIST 26.59KM. AT NARAINA : DIST PROT, DIFFERENTIAL INDICATION.
17	7.8.17	16:25	NARAINA 220/33kV 100MVA Tx-III	7.8.17	17:02	86, I/C TRIPPED ON O/C, R & B PHASE.
18	7.8.17	14:55	220kV BAMNAULI-NARAINA CKT-II	7.8.17	16:01	AT BAMNAULI : DIST. PROT, DIST 26.59KM. AT NARAINA : DIST PROT, DIFFERENTIAL INDICATION.
19	8.8.17	10:28	220kV MEHRAULI - BTPS CKT. - II	8.8.17	15:10	AT MEHRAULI : DIST PROT, ZONE-I, DIST 11.56KM, 186. AT BTPS : DIST PROT, DIST 5.5KM. SPS OPERATED ON 66KV CDOT CKT. I&II, 66KV MALVIYA NAGAR CKT. I&II.
20	8.8.17	19:04	220kV GEETA COLONY- PATPARGANJ CKT - II	8.8.17	19:28	AT GEETA COLONY : DIST PROT, ZONE-I, DIST 671MTS. AT PATPARGANJ : DIST PROT, ZONE-II, DIST 3.7.KM.
21	9.8.17	12:26	SHALIMAR BAGH 220/33kV 100MVA Tx-I	9.8.17	15:24	TRIPPED ON 86
22	10.8.17	13:27	220KV BAWANA-SHALIMARBAGH CKT-II	10.8.17	13:29	AT SHALIMARBAGH : AUTO RECLOSE. AT BAWANA : CKT. DID NOT TRIP.
23	11.8.17	03:16	220kV GAZIPUR - BTPS CKT	11.8.17	10:35	AT GAZIPUR : DIST PROT, ZONE-I, DIST 11KM, Y PHASE.
24	11.8.17	10:44	220kV GAZIPUR - BTPS CKT	12.8.17	09:34	AT GAZIPUR : CVT DISAPPEAR. TRIED FROM GAZIPUR, TRIPPED ON POLE DISCREPANCY.
25	11.8.17	11:20	220 KV PATPARGANJ - I.P. CKT-I	11.8.17	11:55	AT I.P. : DIST PROT, DIST 0.745KM, ZONE-I, PHASE. AT PATPARGANJ : 86, 186.
26	11.8.17	11:22	220 KV PATPARGANJ - I.P. CKT-II	11.8.17	15:13	AT PATPARGANJ TRIPPED ON O/C. AT I.P. CKT. DID NOT TRIP.
27	11.8.17	12:47	220 KV PATPARGANJ - I.P. CKT-I	11.8.17	22:43	AT PATPARGANJ: DIST PROT, ZONE-I, 186, 186. AT I.P.: MANUALLY MADE OFF. FIRE REPORTED IN YARD AT I.P.STN. HOT POINT REPORTED AT ISOLATOR OF R PHASE LINE ISOLATOR OF I.P. – PATPARGANJ CKT. –I

SL NO	OCCURRENCE OF BREAK-DOWN		DETAILS OF THE BREAKDOWN	TIME OF RESTORATION		REMARKS
	DATE	TIME		DATE	TIME	
28	12.8.17	11:01	220KV WAZIRABAD - MANDOLA CKT-I	12.8.17	12:39	AT WAZIRABAD : DIST PROT, ZONE-I, DIST 7.1151KM, AT MANDOLA : DIST PROT, YB PHASE.
29	14.8.17	10:13	NARELA 220/66kV 100MVA Tx-I	14.8.17	12:15	WITHOUT INDICATION.
30	14.8.17	12:27	220KV GOPALPUR- MANDOLACKT-II	14.8.17	12:42	AT GOPALPUR : DIFFERENTIAL TRIP, R&Y PHASE, 86. AT MANDOLA CKT. DID NOT TRIP.
31	14.8.17	12:35	220KV MEHRAULI - VASANT KUNJ CKT.- II	14.8.17	14:55	AT MEHRAULI : DIST PROT, ZONE-II, B PHASE DIST 7.095KM. AT VASANT KUNJ : CKT. DID NOT TRIP.
32	14.8.17	15:03	NARELA 220/66kV 100MVA Tx-I	14.8.17	16:38	WITHOUT INDICATION.
33	15.8.17	11:08	220KV WAZIRABAD - MANDOLA CKT-IV	15.8.17	11:34	AT WAZIRABAD : DIST PROT, DIST 3.90KM. AT MANDOLA : DIST PROT, DIST. 10.16KM.
34	15.8.17	11:47	220KV MAHARANI BAGH - SARITA VIHAR CKT	15.8.17	12:14	AT MAHARANI BAGH : DIST PROT, ZONE-I. AT SARITA VIHAR DIST PROT, ZONE-I, DIST 2.86KM.
35	15.8.17	13:30	400kv Dadri - Harsh Vihar Ckt. -II	15.8.17	13:58	AT HARSH VIHAR : DIST PROT, R PHASE, 86. AT DADRI : CKT. DID NOT TRIP.
36	15.8.17	12:36	400kv Dadri-Harsh Vihar Ckt-I	15.8.17	14:10	AT HARSH VIHAR : DIST PROT, ZONE-I, DIST 26.2KM. AT DADRI : CKT. TRIPPED ON DIST PROT.
37	15.8.17	14:15	220KV GEETA COLONY- PATPARGANJ CKT-I	15.8.17	15:16	AT PATPARGANJ : DIST PROT, ZONE-I, DIST 288MTS, 186 & 186. AT GEETA COLONY : DIST PROT, ZONE-II, DIST 4.069KM.
38	15.8.17	18:17	220KV WAZIRABAD - MANDOLA CKT-I	15.8.17	18:48	AT WAZIRABAD : DIST PROT, ZONE-I, DIST 4.30KM.
39	15.8.17	19:20	MASJID MOTH 220/33kV 100MVA Tr-III	15.8.17	19:50	DIFFERENTIAL PROT. I/C TRIPPED ON 86.
40	16.8.17	11:21	220KV OKHLA - BTPS CKT.- I	16.8.17	12:57	AT BTPS : DIST PROT, ZONE-I, DIST 3.5KM. AT OKHLA : DIST PROT, ZONE-I, 86, DIST 5.361KM, MASTER RELAY.
41	16.8.17	13:24	220KV BAMNAULI-NAJAFGARH CKT-II	16.8.17	15:43	AT BAMNAULI : DIST PROT, ZONE-I, DIST 61MTS, 186.
42	16.8.17	19:10	INDRAPRASTHA POWER 220/33kV 100MVA Tx-I	16.8.17	19:32	O/C, B PHASE, 51NX.
43	16.8.17	19:10	INDRAPRASTHA POWER 220/33kV 100MVA Tx-III	16.8.17	19:35	O/C, 86 , ABC PHASE.
44	17.8.17	01:47	220KV MAHARANIBAGH-TRAUMA CENTER CKT-I	17.8.17	17:22	AT MAHARANI BAGH : 86B, AT TRAUMA CENTER : 86 A&B.
45	17.8.17	07:46	SHALIMAR BAGH 220/33kV 100MVA Tx-III	17.8.17	17:15	86 & 87.
46	17.8.17	10:27	220KV GOPALPUR- MANDOLACKT-II	17.8.17	11:30	AT GOPALPUR : SUPPLY FAIL FROM MANDOLA.
47	17.8.17	10:27	GOPALPUR 33/11kV, 16MVA Tx-I	17.8.17	11:22	86
48	17.8.17	10:27	GOPALPUR 220/33kV 100MVA Tx-III	17.8.17	11:12	TR. TRIPPED ON 86, I/C TRIPPED ON INTERTRIPPING.
49	17.8.17	10:27	GOPALPUR 33/11kV, 16MVA Tx-II	17.8.17	11:22	86
50	17.8.17	18:40	SHALIMAR BAGH 220/33kV 100MVA Tx-III	17.8.17	21:28	I/C TRIPPED ON 86.
51	18.8.17	11:48	220KV GAZIPUR - BTPS CKT	18.8.17	16:16	AT BTPS : DIST PROT, DIST 17.5KM, E/F.
52	18.8.17	14:27	220KV BAMNAULI - DIAL CKT-II	18.8.17	15:08	AT DIAL : DIST PROT, ZONE-I, AT BAMNAULI : DIST PROT, ZONE-I, DIST 9.681KM. SPS OPERATED AT MEHRAULI ON CDOT CKT. I & II, MALVIYA NAGAR CKT. I & II.
53	18.8.17	15:25	220KV BAMNAULI-NAJAFGARH CKT-II	18.8.17	17:35	AT NAJAFGARH : DIST PROT, ZONE-II, DIST 11.7KM. AT BAMNAULI : DIST PROT, ZONE-II, DIST 7.418.
54	18.8.17	19:02	220KV BAWANA - KANJHAWALA CKT - 1	18.8.17	19:38	AT BAWANA : DIST PROT, ZONE-I, DIST 6.12KM. AT KANJHAWALA : DIST PROT, ZONE-I, DIST 15.7KM.
55	19.8.17	08:13	220KV WAZIRABAD - MANDOLA CKT-III	19.8.17	08:38	AT WAZIRABAD : DIST PROT, ZONE-I, DIST 828MTS. AT MANDOLA : CKT. DID NOT TRIP.
56	19.8.17	13:15	PATPARGANJ 220/66kV 100MVA Tx-I	19.8.17	13:36	E/F.
57	19.8.17	13:15	PATPARGANJ 220/66kV 100MVA Tx-II	19.8.17	15:20	E/F.

SL NO	OCCURRENCE OF BREAK-DOWN		DETAILS OF THE BREAKDOWN	TIME OF RESTORATION		REMARKS
	DATE	TIME		DATE	TIME	
58	20.8.17	15:27	220kV WAZIRABAD - KASHMERE GATE CKT-II	20.8.17	16:30	AT WAZIRABAD : DIST PROT, ZONE-I, DIST 1.256.
59	21.8.17	09:54	220kV GEETA COLONY- PATPARGANJ CKT - II	21.8.17	10:17	AT PATPARGANJ : DIST. PROT, ZONE-I. AT GEETA COLONY, DIST PROT, ZONE-I, DIST 2.219KM.
60	21.8.17	13:42	220kV BAMNAULI - DIAL CKT-II	21.8.17	15:08	AT BAMNAULI : DIST PROT, ZONE-I, DIST 9.86KM, 186 A&B. AT DIAL : B PHASE TRIP, MAIN-I, B PHASE FAULTY.
61	21.8.17	14:08	220kV GOPALPUR- MANDOLACKT-II	21.8.17	14:55	AT GOPALPUR : DIST PROT, ZONE-I, DIST 19.13KM, B PHASE FAULTY.
62	21.8.17	23:26	220kV MEHRAULI - BTPS CKT. - II	22.8.17	11:47	AT BTPS : DIST PROT, DIST 3.2KM, R PHASE, E/F. SPS OPERATED AT MEHRAULI ON C DOT CKT. I &II, MALVIYA NAGAR CKT. I&II.
63	22.8.17	10:33	220kV WAZIRABAD-GEETA COLONY CKT-I	22.8.17	11:30	AT GEETA COLONY : TRIP A;BC, DIST PROT. AT WAZIRABAD : DIST PROT, ZONE -I.
64	23.8.17	13:23	220kV GAZIPUR - BTPS CKT	23.8.17	16:50	AT BTPS : DIST PROT, ZONE-I, DIST 16.8KM, E/F.
65	23.8.17	16:23	220kV WAZIRABAD - KASHMERE GATE CKT-I	23.8.17	17:57	AT WAZIRABAD : DIST PROT, ZONE-I, DIST 1.333KM. AT KASHMIRI GATE : NO TRIPPING.
66	24.8.17	11:24	KANJHAWALA 220/66kV 100MVA Tx-I	24.8.17	13:16	B PHASE DROPPER JUMPER CLAMP BURNT.
67	24.8.17	16:01	220kV MEHRAULI - BTPS CKT. - II	24.8.17	20:19	AT MEHRAULI : DIST PROT, ZONE-I, DIST 14.05KM. AT BTPS : DIST PROT, ZONE-I, DIST 2.5KM, R PHASE, E/F. 66KV C DOT CKT. I&II, MALVIYA NAGAR CKT. I&II ALSO TRIPPED.
68	25.8.17	11:11	220kV MEHRAULI - BTPS CKT. - II	25.8.17	12:10	AT MEHRAULI : DIST PROT, ZONE-I, DIST 13.24KM. 66KV C DOT CKT. I & II & MALVIYA NAGAR CKT. I & II ALSO TRIPPED ON SPR.
69	25.8.17	17:09	220kV GEETA COLONY- PATPARGANJ CKT - II	25.8.17	18:32	AT PATPARGANJ : DIST PROT, ZONE-I, DIST 860.7MTS. AT GEETA COLONY : DIST PROT, ZONE-I, DIST 3.443KM.
70	25.8.17	17:44	220kV GEETA COLONY- PATPARGANJ CKT-I	25.8.17	18:32	AT GEETA COLONY : DIST PROT, ZONE-II, DIST 3.557KM. AT PATPARGANJ : DIST PROT, ZONE-I, DIST 886MTS.
71	26.8.17	14:35	MEHRAULI 220/66kV 100MVA Tx-II	26.8.17	16:10	SPARKING OBSERVED ON B PHASE LINE ISOLATOR CLAMP OF 66KV I/C-II.
72	26.8.17	14:40	220kV PRAGATI - SARITA VIHAR CKT - I	26.8.17	15:12	AT SARITA VIHAR : DIST PROT, DIST 15.38KM, AT PRAGATI : DIST PROT, DIST 1.770KM, ZONE-I, 186, O/C, E/F.
73	26.8.17	15:56	220kV WAZIRABAD - MANDOLA CKT-II	26.8.17	15:58	AT WAZIRABAD : TRIPPED WITHOUT INDICATION.
74	26.8.17	18:30	220kV GEETA COLONY- PATPARGANJ CKT - II	26.8.17	18:43	AT PATPARGANJ : DIST PROT, DIST 1.391KM, E/F. AT GEETA COLONY : CKT. DID NOT TRIP.
75	27.8.17	12:14	220kV MEHRAULI - BTPS CKT. - II	27.8.17	14:21	AT MEHRAULI : DIST PROT, ZONE-I, DIST 7.098KM. AT BTPS : DIST PROT, ZONE-I, DIST 12.2KM.
76	27.8.17	12:54	220kV MEHRAULI - BTPS CKT. - I	27.8.17	16:12	AT MEHRAULI : DIST PROT, ZONE-I, DIST 11.01KM. AT BTPS : DIST PROT, ZONE-II, DIST 14.4KM.
77	27.8.17	18:42	220kV GOPALPUR-SUBZI MANDI CKT-II	27.8.17	20:42	AT GOPALPUR : DIST PROT, ZONE-II, DIST 6.201KM, 186. AT SUBZI MANDI : CKT. DID NOT TRIP.
78	28.8.17	05:22	KANJHAWALA 66/11kV, 20MVA Tx-I	28.8.17	06:01	OLT, 86, 30G.
79	28.8.17	08:54	220kV GEETA COLONY- PATPARGANJ CKT-I	28.8.17	22:02	AT GEETA COLONY : DIST PROT, ZONE-I, DIST 1.781KM, O/C. AT PATPARGANJ : DIST PROT, DIST 7.206KM, E/F, 186, 186.
80	28.8.17	09:55	220kV GAZIPUR - BTPS CKT	28.8.17	14:03	AT BTPS : DIST PROT, ZONE-I, DIST 14KM.
81	28.8.17	10:01	400kV Mundka-Jhatikara Ckt-I	28.8.17	14:40	AT MUNDKA : TRIPPED ON PD.
82	29.8.17	13:43	MASJID MOTH 220/33kV 100MVA Tr-III	29.8.17	18:50	TRIPPED ON DIFFERENTIAL, I/C TRIPPED ON 86.
83	29.8.17	16:53	220kV GOPALPUR- MANDOLACKT-I	29.8.17	17:38	AT GOPALPUR : RY PHASE DIFFERENTIAL TRIP, 86ABC. AT MANDOLA DIST PROT, ZONE-II, DIST 21.36KM.

SL NO	OCCURRENCE OF BREAK-DOWN		DETAILS OF THE BREAKDOWN	TIME OF RESTORATION		REMARKS
	DATE	TIME		DATE	TIME	
84	30.8.17	22:09	220KV DIAL- MEHRAULI CKT-I	1.9.17	11:50	AT MEHRAULI : DIST PROT, ZONE-I, DIST 3.512KM. AT DIAL DIST PROT, ZONE-I, DIST 3.95KM.
85	31.8.17	12:31	OKHLA 220/33KV 100MVA Tx-III	31.8.17	12:40	I/C TRIPPED ON 86, 51A.
86	31.8.17	12:31	OKHLA 220/33KV 100MVA Tx-IV	31.8.17	14:35	TR. TRIPPED ON 86, REF, I/C TRIPPED ON 86.
87	31.8.17	15:58	PAPPANKALAN-I 220/66KV 160MVA Tx-5	31.8.17	23:35	TR. TRIPPED ON DIFFERENTIAL, LV REF, I/C TRIPPED ON 86, LA BLAST.
88	31.8.17	15:58	PAPPANKALAN-I 220/66KV 100MVA Tx-IV	31.8.17	16:52	TR. TRIPPED ON DIFFERENTIAL, I/C TRIPPED ON 86.

**20 DETAILS OF UNDER FREQUENCY RELAY OPERATIONS IN DELHI POWER SYSTEM DURING THE MONTH OF AUGUST 2017**

DATE	S. N.	TIME		Name of Grid	NAME OF AFFECTED FEEDERS	MODE	LOAD RELIEF IN MW
		OUT	IN				
				NIL			